

# NSW Endurance News

Issue 1, January - February 2013



SUPPORTED BY:



**\$5.50**

Official Publication of the NSW Endurance Riders Association Inc  
PO Box 6627 Chatham NSW 2430 ABN 66 856 011 605



# Da Brim<sup>®</sup>

- Da Brim Equestrian Endurance Brim for Helmets.
- This equestrian endurance helmet visor provides fantastic sun protection.
- This helmet visor provides broad sun protection and is perfect for a long trail ride or practicing in an outdoor ring.
- This model works with virtually any equestrian helmet.
- Installs quickly and easily without modification to your helmet or sticky adhesives.
- Air flows freely through helmet vents, promoting cooling
- Helps block glare
- Secure attachment that stays on—even at a gallop!
- Reinforced brim edge for added stability
- UPF50+ Sun Protection



# TRIFECTA of SADDLE CLOTHS



All models have these qualities;

- Deluxe' 100% Pure Wool
- Ultra Dense Comfort for Your Horse
- Breathable Fleece
- Highly flexible
- Machine Washable
- Girth Guides & Ties
- Girth Covers - all lengths

**Designed for Endurance**  
**Performance Proven!**



## 'The Original & Still the Best'

New products are not on the current website - upgrade in progress

Order Direct  
E: [karen@dluapark.com.au](mailto:karen@dluapark.com.au)  
Ph: (07)5464 4222



# SCHUELEIN SADDLES



HAND MADE FITTING A VARIETY OF HORSES  
RIDE THE DISTANCE IN SAFETY, COMFORT +  
STYLE. QUALITY TACK AVAILABLE  
STARTING PRICE 1950.00



CONTACT 02/49976251 MOBIL 0431526162 E-MAIL [ozdiet@hotmail.net.au](mailto:ozdiet@hotmail.net.au)

Only \$150.00/ wk  
incl. hay, agistment  
& 5 training rides

*Equine Ability*  
Horse Starting & Education

## Horse Miles

### Need your horse worked?

We offer a horse education program that focuses on lots of riding, exposure to stock, other horses & rivers, & improving softness & body control

Programs to suit your needs, whether its fitness for endurance or general education for grounding

Trainers available now  
to work your horse!

Call Mark Langley 0417 200 411 or 02 6732 5292

[www.EquineAbility.com.au](http://www.EquineAbility.com.au)



# Contents

## Advertisers

Dixon Smith	Back Cover
D-Lua Park	Inside front cover
Equine Ability	Inside back cover
Hay Maximizer	9
Kintamani Arabians	39
Schuelein Saddles	Inside back cover

## Results & Calendar

Ride Calendar	40
Ride Results	54
Training Ride Results	60

## Notices & Miscellaneous

New members list	22
Proxy Votes & SMC Nominations	64
Vale Anne Jones	8
Vale Sue Innes	9

## Reports

AERA Meeting Points	46
NSW AGM Information	5
NSW President's Report	2
NSW Meeting Report 14 September	36
NSW Meeting Report 2 November	50
Membership Fees	Flyer
PA Insurance Details	41
Profit & Loss	4
Track Preservation Report	3

## Point Scores

NSW Pointscore Results	18
NSW One Horse One Rider	20
National Point Score	21
National One Horse One Rider	23

## Ride Previews

Bumbaldry	26
Cedar Ridge	27
Horsley Park	25
Shahzada	26
Tooraweenah	28
Zone One Training weekend	24

## Ride Reviews

Brookvale	32
Kiwarra Cup	44
Mudgee	30
Sassafras	10
Sussex Inlet	14
Snowy Zone Championship	42
Top 10 Photos	48

## Ride Information

AERA Waver Form	72
Advertising rates	79
Accredited Vet List	65
Annual Horse Registration	73
Annual log book return	71
Distance Scrolls	74
Log Book ID Procedure	69
Provisional Chief Stewards	77
Register of Chief Stewards	78
Ride Booking Procedure	68
Ride bases map	66
Ride Secretaries	75
State Management Committee	80
Transfer of Ownership	70
Web site information	67

## Star Performer!

**Front Cover: Martin Gregson & Burren-dah Gladiator.**

**A list of some of their impressive 2012 results is below.**

**1st Distance Heavyweight Rider (NSW);**

**1st Heavyweight Points Horse (NSW)**

**1st Points Heavyweight Rider (NSW);**

**1st Distance Heavyweight Horse (NSW)**

**1st One Horse One Rider (NSW); 1st National Heavyweight Horse**

**1st National Distance Horse; 1st National Distance Rider**

**Photo: Animal Focus**

**Cover: Linda Henley**

**Editor: Helen Rich**





# President's Report

On the administrative front; the committee has worked efficiently and effectively all year and we have generally been able to complete business at a 'civil' hour with each meeting being closed at about 10:30pm and we have been able to manage the association's affairs with less frequent meetings.

There is no backlog of administrative matters to speak of, and notable among the matters resolved have been the restructuring of our protocols for dispute and disciplinary management brought about by a mandatory constitutional update, and the Web Site has been restructured in a user friendly format managed now by a group of four SMC members, each of whom has the access and skills to keep the content topical and up to date.

As directed by the membership at the last two AGM's the SMC through our AERA delegates has continued to push for changes to the Personal Accident component of the membership fee structure and we are pleased to announce that partly due to our representations and partly due to a forecast hike in the Premiums for 2013 an alternate optional policy has been adopted. See the details on the front page of the Web Site.

The SMC has this year, launched into two major initiatives that will make the period 2013 to 2015 busy and building years with a corresponding increase in the need for member voluntary input at the administrative level; so if you have been thinking of getting involved, think no more!

**Project TQ15** - 2015 will be the 50<sup>TH</sup> running of the Tom Quilty and it was deemed appropriate that it should come 'home' for that year. With the assistance of legendary Ron Males a survey of the access to original Quilty tracks was carried out, and after a suitable course and venue was identified VERA was approached for a swap of dates to allow us to stage the event. VERA agreed – Thank you VERA! Management of this project has been delegated to a subcommittee of capable and experienced members and will be a memorable event with the AERA also establishing a separate subcommittee to deal with the celebratory aspects.

**Introductory Tier** - At the AGM in February the 'Membership Growth' subcommittee will put to the membership a model for an entry level tier to the sport based on riding distances from 40km to 65km, and an 'Intermediate' category of membership, all of which is designed to broaden the appeal of our sport, smooth the transition into our sport for newcomers, and ultimately reverse the long term trend of membership decline.

I hope Santa was kind to you and your 'Neddy', and that you have had a happy new year and I look forward to seeing you all at the AGM.

Cheers, Tom Perkins Snr. 20435



## NSW ERA COMMITTEE MEETINGS

Meetings are held at the Arabian Society Rooms

George Street, Windsor

Meetings commence at 6.00pm sharp.

All are invited to attend.

Next meeting:

AGM 2 February 2013 at Manilla

# Track Preservation Report

## **National Parks trails to be opened to horses – progress report**

The finalised "Strategic Directions for Horse Riding in NSW National Parks and Reserves" document has been released by the NSW Minister for the Environment. Key improvements from the draft version include: fast-tracking many of the proposals to a two-year instead of a three-year schedule; a process for initiating change in the "low-priority" regions as well as in the 8 identified priority regions; and horse riding pilots in 5 wilderness areas instead of just one. The extreme greens are furious!

By the time this newsletter comes out, NPWS will have begun contacting horse riding representatives to invite us to attend trail workshops around the state. These sessions will establish a work plan for reopening trails and improving horse riding access. The starting point for discussions, and for the contact list, will be the trail suggestions which I collated at the start of this year. NPWS has limited resources and too few staff, so any change that involves time or money, no matter how small, will need to fit in with their overall program of work. We must also work within the constraints of the legal rules for each park; if a Plan of Management presently says no horse riding is allowed, there is a lengthy formal process involved in getting that changed.

I ask anyone invited to attend to make yourself available, even if it means giving up a weekend of training or socialising. This is your opportunity to influence if and when your trails are re-opened. I also ask you to remain patient – we are still just at the start, with a long way to go. Finally, you will need to leave past resentment and bitterness about trail closures at the door. The fight is over, NPWS accepts horse riding as a legitimate activity in parks. These sessions are about working co-operatively to create better riding times ahead.

## **Draft Plans of Management**

All National Parks & Wildlife Service Plans of Management, both draft and finalised, can be viewed at the NPWS website at <http://www.environment.nsw.gov.au/parkmanagement/ParkAndFireManagementPlansByCategory.htm>

Plans of management define if and where you are allowed to ride in a park.

You can make submissions by post, email or directly from the website. A submission is simply your comments on the plan of management, whether agreeing or disagreeing with what is being proposed.

Even though we starting to win back some of our trails, it's still important to provide feedback on Plans of Management that affect your riding areas. If we don't continue speaking up, our extreme green opponents could regain the upper hand.

**Southern Richmond Range Group** – north of Grafton. Includes Fortis Creek & Mount Pikapene NPs, Mount Neville, Banyabba and Chapmans Peak NRs, and 7 associated State Conservation Areas. A large part of Banyabba and Fortis Creek is declared as wilderness area and therefore currently off-limits to horses. Horse riding permitted on two public roads only, which are not even part of the park, plus unspecified "neighbour access trails" by specific consent. Submissions close 25 February 2013.

**The Crookwell Reserves** – north of Crookwell. Includes Thalaba and Nuggetty SCAs, and Gillindich, Burwood Creek and Mount Davies NRs. Horse riding not permitted. Submissions close 25 February 2013.

*Fiona Meller*

# N.S.W. ENDURANCE RIDERS ASSOCIATION INC.

## Profit & Loss [With Last Year]

January 2012 through 7th December 2012

	This Year	Last Year	Variance
<b><u>Income</u></b>			
Income - Grants	\$23,510	\$20,300	\$3,210
Income - Membership Fees	\$70,914	\$75,144	(\$4,230)
Income - Ride Fees	\$55,445	\$53,205	\$2,239
Income - Dinner Dance	\$3,371	\$3,405	(\$33)
Income - Sale of Merchandise	\$6,342	\$6,835	(\$494)
Less Cost of Merchandise Sales	(\$3,742)	(\$4,188)	\$446
Income - Newsletter	\$8,140	\$10,128	(\$1,988)
Income - AERA Charges	\$4,220	\$4,170	\$50
Income - Other	\$2,894	\$3,071	(\$177)
<b>Gross Profit</b>	<b>\$171,093</b>	<b>\$172,070</b>	<b>(\$977)</b>
<b><u>Expenses</u></b>			
A.E.R.A.	\$17,978	\$23,913	\$5,936
Accounting Fees	\$1,820	\$1,830	\$10
AGM Expenses	\$2,084	\$1,950	(\$134)
Annual Awards	\$8,385	\$8,026	(\$360)
Bank Fees	(\$14)	\$24	\$39
Bank Fees - Card Merchant Fees	\$1,564	\$911	(\$653)
Computer Hardware Expenses	\$0	\$147	\$147
Course Preservation Expenses	\$187	\$262	\$76
CS Accreditation & Training	\$0	\$464	\$464
Depreciation	\$0	\$1,705	\$1,705
Gifts, Flowers, Cards etc	\$106	\$73	(\$34)
IDP Expenses	\$199	\$0	(\$199)
Insurance	\$47,349	\$57,216	\$9,866
International / FEI	\$1,594	\$3,000	\$1,406
Late Fees & Penalties	\$0	\$110	\$110
Medication Control	\$5,117	\$640	(\$4,477)
Meeting Expenses	\$6,425	\$9,335	\$2,910
Membership Refunds	\$0	\$145	\$145
Newsletter Expenses	\$13,189	\$13,220	\$31
Promotional Expenditure	\$1,327	\$3,568	\$2,240
Quilty Expenses	\$1,055	\$2,574	\$1,520
Ride Management Related	\$4,190	\$3,576	(\$614)
Secretariat Expenses	\$30,176	\$29,816	(\$360)
SMC Non Meeting Reimbursements	\$1,129	\$1,256	\$126
State Ride Expenses	\$6,655	\$8,119	\$1,464
Statutory Fees	\$170	\$41	(\$129)
TPR Accreditation & Training	\$178	\$570	\$392
Vet Accreditation & Training	\$0	\$1,296	\$1,296
Volunteer Rewards	\$2,469	\$2,796	\$327
Website Expenses	\$2,030	\$87	(\$1,943)
<b>Total Expenses</b>	<b>\$155,362</b>	<b>\$176,668</b>	<b>\$21,306</b>
<b>Net Profit / (Loss)</b>	<b>\$15,731</b>	<b>(\$4,598)</b>	<b>\$20,329</b>



# The Annual General Meeting

New South Wales Endurance Rider's Association Inc.

Saturday 2<sup>nd</sup> February 2013

Manilla RSL & Ex-Servicemen's Club

25 Court Street, Manilla

## Timetable

From 11.30 am

12.30 – 4.30pm

6.30 – 12 midnight

Registration for Voting & Renewal of Memberships

Annual General Meeting

2012 Presentation and Dinner Dance

## Agenda for AGM

Confirm minutes of previous Annual General Meeting

Presidents Report

Financial Report

Committee Reports

Election of Committee Vacancies

Notices of Motion

General Business

Attendance and voting

Any person can attend the meeting. Only senior financial members are entitled to vote. If you were a Senior Member for 2012 or have joined as a Senior Member for 2013, you are entitled to vote. You do not have to rejoin to participate in the meeting but bring your 2012 membership card with you.

## Accommodation

Camping free of charge at the Manilla Showground

Manilla Motel – 6785 1306

The Abbey on Rowan – 6785 0115

Oakhampton Homestead – 6785 6517 (20kms from town)

Post Office Hotel - 67851162

Royal Hotel – 6785 1017

Imperial Hotel – 6785 1018

## Proxy Votes

Each senior financial member who attends is entitled to five (5) proxy votes on behalf of other Senior financial members. Copies of the Proxy Forms are included in this Newsletter.

## Proxy Forms must be received by the Secretariat at least 24 hours before the start of the meeting

Proxy Forms should be sent to PO Box 6627 Chatham NSW 2430. Proxy Forms need to be at the Chatham Post Office no later than Friday, 1<sup>st</sup> February 2013. Alternatively forms can be sent to the Secretariat by email (scanned form to [nswera@westnet.com.au](mailto:nswera@westnet.com.au)) or faxed (65538661) to arrive 24 hours before the start of the meeting.

## Nominations for Committee

Nominations for election to the Committee will be accepted by the Secretary up to seven (7) days before the date of the AGM (rule 17.1(b)).

If insufficient nominations have been received, nominations will be received from the floor at the Annual General Meeting (rule 17.2).

An election of the new committee will be conducted. Anyone wishing to nominate should complete a nomination form and include your name, membership, a brief description of your involvement with endurance riding and reasons for seeking election to the committee.

## NOMINATIONS FOR THE COMMITTEE TO BE PUT ON NOTICE

### Term ends February 2013

Gay Bonham

Brad Dillon

Carol Griffiths

Belinda Hopley

Gary Tweedie

### Term ends February 2014

Haydn Fisher

John Howe

Tom McCormack

Tom Perkins Snr

Marlee Turnbull

Nominations must be made by two Current Senior Members (Quote M'Ship Number). The Nominee must be a Current Senior Member and must sign his/her assent. Send Nominations to NSWERA PO Box 6627 Chatham NSW 2430 to arrive at the Post Office by 26 February 2013. Alternatively you scan and email to [nswera@westnet.com.au](mailto:nswera@westnet.com.au) or fax to 65538661.

In the event that more than the required number of nominations are received prior to the meeting, a ballot will be held and the five people with the most number of votes will fill the vacancies. If the required number of nominations is received prior the meeting, all those people will be declared elected and the casual vacancy will be filled by random draw from all the nominations unless someone volunteers to fill the casual vacancy. If less than the required number of nominations are received prior to the meeting and no further nominations are received at the meeting, the remaining vacancies will be casual vacancies that the Committee will attempt to fill (Clause 16(2) of the Constitution).

Nomination Forms can be found at the back of this booklet or on the web:- [www.nswera.asn.au](http://www.nswera.asn.au)).

Membership fees for 2013 may be paid at the AGM.

#### Notices of Motion

Any Notices of Motions received will be printed in the AGM Booklet or in this Newsletter. Notices of motions need to be received by the Secretary no later than 30 December 2012.

#### Dinner Dance

Commencing at 6.30 pm there will be a dinner dance where the presentation of point score winners will be made. It is hoped that everyone will come to the dinner but if you just want to attend the presentation you are very welcome.

Music provided with the compliments of your current committee. Come along and contribute and have a great social time as well. Hope to see you all there.

Dinner price is \$20 per adult (alcohol not included) and children under 12 years \$12 per head which includes a roast dinner and dessert. If you have special dietary needs, please indicate this on the booking form.

**Bookings for dinner are essential and need to be paid in advance.**

Please post your cheque or credit card information together with your personal details to *The Secretariat, PO Box 6627, Chatham NSW 2430.*

**IF YOU KNOW THAT YOU ARE THE RECIPIENT OF TROPHIES OR RIBBONS, AND WILL NOT BE ATTENDING THE PRESENTATION, PLEASE NOMINATE A PERSON THAT WILL BE COLLECTING YOUR AWARD/S FOR YOU AND ADVISE THE NSWERA SECRETARIAT ON 02-65538640, Email address – [nswera@westnet.com.au](mailto:nswera@westnet.com.au). Lost or misplaced trophies are not the responsibility of the NSWERA.**

## NSWERA AGM Dinner Booking Form

RSVP by 25 January 2013

NAME .....

Phone No. .... Email: .....

No of Adults ..... (\$20 per head includes roast dinner and dessert)

No of Children ..... (\$12 per head, under 12 years includes small roast and dessert)

TOTAL PAY BY CHEQUE \$ ..... Or

TOTAL PAY BY CREDIT CARD

Type of Credit Card eg Visa, Mastercard etc. ....

Name on Credit Card ..... Expiry Date .....

Amount \$ .....

Signature .....

Are you the recipients of trophies/ribbons Yes/No (circle)

*Post to Secretariat at PO Box 6627, Chatham NSW 2430 or Fax to 65538661*



# **Program - NSWERA Annual General Meeting**

## **1<sup>st</sup> to 3<sup>rd</sup> February 2013 in Manilla**

The Tamworth & District Club will be hosting the NSW ERA Annual General Meeting in Manilla on 2 February 2013. In conjunction with the AGM, we have pleasure in inviting all members and prospective new members to a series of educational seminars. You are welcome to camp at the Manilla Showground if you wish. Details of other available accommodation are in the official AGM Notice in this newsletter.

A Chief Steward's Course, a TPR Course and a workshop to familiarise ride secretaries with the new data base system will be run during the weekend if there is sufficient interest. Please contact us to express your interest.

The proposed program is as follows:

### ***Friday - Manilla Showground***

- |                  |   |
|------------------|---|
| 2.30pm to 4.30pm | Basic riding to improve riding skills – or...how to get the big points in the fittest horse workouts! How much work does your horse need? How to prepare your horse to meet your aspirations including feeding and working.   |
| 5.30pm to 7.00pm | Presentation on what vets look for when evaluating your horse, what medications are allowed and may help your horse and what are not allowed.<br>Ask the old farts – an open forum of discussion with some more experienced riders and officials on an 'experts' panel. |

### ***Saturday – Manilla Showground***

- |                  |  |
|------------------|--|
| 8.00am to 9.30am | Workshop to learn how to get a better trot out from your horse during vetting. |
|------------------|--|

### ***Manilla RSL Club or Bowling Club***

- |                   |                                  |
|-------------------|----------------------------------|
| 11.30am           | Register for AGM                 |
| 12.30pm to 4.30pm | Annual General Meeting           |
| 6.30pm to 12.00pm | 2012 Presentation & Dinner Dance |

### ***Sunday – Manilla Showground***

- |                   |   |
|-------------------|---|
| 9.30am to 11.30am | Powerpoint presentation and practical demonstration by MaryAnne Leighton of Equine Emergency Rescue including floating accidents, emergency first aid and post accident care. |
|-------------------|---|

Look forward to catching up in the new year

**Tamworth and Districts Endurance Club.**

## ***Anne Jones' Passing***

Australian Endurance lost a valuable member when Anne Jones succumbed to her long battle with cancer.

Anne was indeed one of the true all-rounders of Endurance. Anne was a competitive and successful rider amassing over 23,000 kms as well as being an administrator in our sport for almost 20 years.

As a rider, Anne achieved 10 Tom Quilty buckles, 11 Faraway and 12 Shahzada completions and represented Australia in the 2005 WEC. Anne also crewed at several international competitions for Australia.

As an Administrator, Anne was QERA Secretary for 18 years from 1992-1995 and then from 1999 until her recent resignation a few weeks ago. Simultaneously Anne was the AERA Secretary from 2002 until 2011 and was a Vice President for 2012.

Anne was awarded Honorary membership of the AERA in March 2012 in recognition of her dedication and commitment to the Sport for almost 30 years.



On behalf of the AERA and the Australian Endurance community, we offer our sincere condolences to Anne's husband Brian, daughter Tracy and granddaughter Jade, and stepsons Darryl and Brad.

Tom McCormack AERA President

Photos: Animal Focus



# Susan Innes—1950—2012



Susan Innes was a wonderfully generous and caring woman who devoted her incredible energy to her family and to the sport of endurance that they became so involved with. While Susan did not ride competitively, she ran a great camp for her husband John and their children Brad, Scott and Natalie and was a gracious host to anyone who dropped by. Old hands will remember the Innes' camp, where everyone gravitated to catch up on the gossip, have a drink or just spend some time with a lovely family who were ride-oriented friends to everyone.

The South Coast Zone as we know it would not have eventuated without the huge effort put in by Susan, John and others. The current rules and log

books were developed at a turbulent time in our sport, during which John was one of the AERA Presidents who had the vision to drive necessary changes, but for which he was vilified by some. Susan was always his rock in these difficult times, supporting John, spending countless hours attending meetings all over the place, fighting bureaucracy, attending to correspondence and many of the other tasks involved in establishing endurance on a viable footing.

On their property in the Kangaroo Valley, Susan and family established the Nattahl Endurance Arabian Stud, furthering their involvement with our sport and seeking to preserve some of the older bloodlines. Susan also bred Rottweilers, and once described her fierce protection of her family as being like that of a Rottweiler bitch with puppies! She was a vivacious, lovely lady who seemed to be meant for the role of wife and mother, always generous with her caring and support for everything they wanted to be involved with.

It is tragic that cancer took her so quickly, as she and John were at last enjoying more relaxing times together, after contributing so much to the sport of endurance. We will miss you Susan and hope the sadness will fade for your loving family, but the memories of an amazing person and wonderful times will always remain.

*By Steve Roberts*

## **Save Money, Reduce Your Feed Bills & Improve Your Horses Health**

With the 'NEW' Hay Maximizer.



Easy to Use & Effective get yours NOW!

[www.haymaximizer.com.au](http://www.haymaximizer.com.au)

P: 0429 99 55 96

# Sassafras Ride Report

## Hi Folks.

The last ride of the **NSW ERA** year was held at Sassafras on the weekend of the 24<sup>th</sup> & 25<sup>th</sup> of November 2012. The weather forecasters got it right for a change predicting 32C and no rain.

A 5am start saw thirty three riders head out at first light into the wilds of Morton National Park. The first riders returning to the ride base in two hours and twelve minutes. After these thirty three riders vetted in only twenty eight headed out for the second leg in the rising heat.

First across the line was Shelly Ison riding Aloha Fabian and Peter Norman riding Talaganda Downs Natifa in a ride time of five hours and six minutes.

Next was Jenny Shephard riding novice gelding Currowan Starlite who was having his second run and first completion in a time of six hours and six minutes. Junior rider Sorcha Stuart Rokvic riding Blake's Heaven Angelico in a ride time of six hours and eight minutes.

A special mention and pat on the back to Robert Catlin who stopped and assisted another competitor who had succumbed to the heat.

The highlights of the weekend:-

- A visit by Santa on the Saturday night.
- The Nerriga Progress Associations food and cake stall.
- Shelly & Peters equal first place.
- Jenny Shephard for best managed horse.
- Geoff Cochrane riding his mule Jonny James in the Social Ride.

Hope to see you all around the ridges.

**Alan Marshall**

Ride Secretary



7353 - Jenny Shephard riding Currowan Starlite, 1st MWT & BC at Sassafras Animal Focus Photograph.





Mark Lindsay on Kintamani Jaffah on their first ride out of Novice, ie 4 rides for the year together. This one at Sassafras. Photo by Animal Focus.

7443 - Peter Norman riding Tallaganda Downs Natifa, 1st HWT & BC and Shelly Ison riding Aloha Fabian, 1st LWT & BC Photo by Animal Focus







Robert Caitlin riding Copperkahn Tiara, 3rd HWT at Sassafras

Photo: Animal Focus

Virginia Blain riding Suncrest Naomi, 5th MWT at Sassafras

Photo:  
Animal Focus



Left:  
7543 - Sorsha  
Stuart-Rokvic  
riding  
Blakes Heaven  
Angelico,  
1st JNR



Donna Parker riding Coolidowns  
Croissant, aka Shakira, in the  
Social at Sassafra

Photos: Animal Focus



Hanna Eronen riding Torrendean  
Barney with riding companion in  
the trainer at Sassafra

Photos: Animal Focus

## Get Well Soon Linda

Linda Jonkers was recently involved in a rather nasty accident  
which resulted in a long hospital stay.

We are all thinking of you.

Photo: Animal Focus



# Sussex Inlet Charity Ride Report

## Sussex Inlet Charity Endurance Ride and South Coast Zone Championship 2012

After an amazing year with its fair share of ups and downs, things were not looking good for the ride, but due to the hard work and generosity of many we were able to run the Sussex Inlet Charity Ride again this year.

And what a ride it turned out to be, to say we were blessed would be the only way to describe it. The amazing people that gathered to mark the track, prepare the ride base & the vets, timekeepers, paperwork officials and a willing band of on course volunteers that attended the check points. The weather again was perfect and a great band of 99 enthusiastic riders enjoyed the beautiful Conjola National Park with a bonus for the main riders, who experienced the breath taking beauty of a the sunrise as they cantered along Washerwomans Beach.

It was a very exciting sight to see main riders mount up and depart just before sunrise with lights on their helmets. Half an hour later the trainer ride departed, with social riders wandering out at 9am after enjoying a bacon & egg roll breakfast from the ride canteen. Competitive riders recorded fast times by our checkpoint crews and radioed back to base through RFS Communications. For the safety of all, riders were made to keep their enthusiastic horses under control whilst crossing the Washerwomans Creek road bridge by two lolly pop traffic controllers, before going through a short bush track that opened out to the beach. Things were quiet at the crossing that time in morning with only 5 cars, one cyclist & one jogger being reported.

The riders then moved onto the sand of Washerwomans Beach which was pretty exciting for those horses from west of the mountains that had never seen the sea before. All riders agreed the fun was worth the effort as they emerged from the bush track to see the sun just above the horizon over a calm sea. After having their numbers logged at our beach checkpoint from about 5.30 am they returned via the powerlines beside the road to re-cross the bridge and return to the safer environs of the National Park.



7025 - Shelly Ison riding Aloha Fabian, BC, and Roz Edmunds riding Everon Park Apollo, = 1st LWT (6hrs) in the 100 kms event.



The first riders returned to the ride base as early as 7.08am after completing 47km, vetted their horses then continued on their way just after 8.am. After the second leg of 33km our main riders could choose to elevate the final 20kms for 100kms South Coast Championship. Out of the 53 riders 26 completed the 100km Championship, 24 completed the 80km Sussex Inlet Charity Ride, 2 horses withdrew and 1 vetted out.

Line honours went to Peter Norman, who was first home in 5.15mins and Heavy Weight South Coast Zone Champion on Tallanganda Downs Natifa. Jenny Shephard, just pipped at the post for line honors was Middle Weight South Coast Zone Champion on Currowan Mojo.

Equal 1st Light Weight was Shelly Ison on Aloha Fabian and Roz Edmunds on Everon Park Apollo holding hands, in traditional style, as they crossed the finish line. 3rd light weight was Irene Adams on Shane D Survivor, 2nd Heavy Weight was Evan Drain Shephard on Currowan Clancy, 3rd Heavy Weight Paddy Smith on Aki Fa Farras Jijan. 2nd Middle Weight was Mitchell Ravallion on Danjera Jed, 3rd Middle Weight John Symons on Forest Dale Belle De Jour.

1st Junior and Junior South Coast Zone Champion



6998 - Alan West riding Ehsun Sahara, last home in the 100kms event in 9hrs



was Georgia Curry on Macquarie Park Banjo, 2nd Junior Sorsha Stuart-Rokvic on Blakes Heaven Angelico and 3rd Junior was Harrison Berg on Castlebar Condor.

Fittest Horses sponsored by Harvey Norman Computers Nowra, were Peter Norman Heavy Weight, John Symons Middle Weight, Shelly Ison Light Weight, and Georgia Curry Junior.

Seventeen of the eighteen horses successfully completed the Trainer ride and all of the 28 social riders returned home safely after much fun and adventure

Many thanks go to our sponsors for without their financial support we could not run the ride, Premium Tyre Service, Solomon Motor Group, Shoalhaven Embroiderers, Manildra Group, Alan-Ki Thoroughbreds, Saddle World

6841 - Peter Norman riding Tallanganda Downs Natifa, 1st HWT and BC (5hrs 15) in the 100kms event





6487 Evan Drain-Shepherd riding Currowan Clancy, 2nd HWT (5hrs 25) and Jenny Shepherd riding Currowan Mojo, 1st MWT (5hrs 15.01) in the 100 kms event

Nowra, Paperbark Camp, Kangaroo Valley Views B&B, Barbeques Galore, Bomaderry Printers, and many other local businesses.



Our thanks also to Belinda Hopley, Chief Steward and to our volunteers and helpers, who are the back bone of any endurance ride.

We wish to give special thanks to Jo Carrick who took over from Wendy as ride organiser, due to Wendy's recent breast cancer operation. Other special thanks must go to, Wendy & Dave Porter, June & Bernie Le France, Tracy Bowman, Sam Bowden & Co, Lynette Elfick, Peter Reilly of Sussex Inlet RFS, Bruce & Ross Carter, Brett Moffett, Bindi Reinhold, Allan Marshall from the Sassafras Ride, Greg Godbie, Sussex Inlet Cancer Support Group, RFS Communications, Cunjurong Point and Sussex Inlet RFS Brigades.

Also everyone on our check points, canteen & office and Shelly & Peter and the South Coast Zone committee. Plus our extreme gratitude goes to Georgia Melas and her daughters Peti, Tina and Christina who were happy to allow the ride to be run from their beautiful property in memory of their late husband and father Nick Melas. Thanks also to our Vets, Glynis & Tony Kuipers, South Nowra Vets and Samantha Singleton, Nowra Vets.

6830 - John Symons riding Forest Dale Belle De Jour, 3rd MWT and BC (5hrs 41) in the 100 kms event



A moving Eulogy was delivered by Jenny Cameron before the pre-ride talk on Saturday evening for Sue Innes, whose years of enthusiasm and effort resulted in the formation of the South Coast Zone of Endurance Riders. Her husband was instrumental in the changes to rules ensuring the safety & wellbeing of all horses entering Endurance Rides. She is sadly missed.

Jo Arblaster acknowledged the recent death of Lesley-Dowey of Arabesque Stud who died in a car accident just a few weeks ago. Both ladies are such a loss to the endurance scene.

With over \$5000 being raised for Breast Cancer and the Rural Fire Service, only one horse requiring the Rescue Horse Float, and the sun setting on tired but happy faces, the day was considered to be a resounding success.

**Wendy Jesson Ride Organiser &  
Lorraine Bentley Ride Secretary**

6903c - Debra Cotton and Buddy having fun in the social ride at Sussex Inlet

Photo: IMG P 6649 - Caption: Surf's up at the Sussex Inlet charity ride. Tracy Haak and Cusworth Artist (aka Tom) take in the early morning seascape



# NSW Point Score Results 2012

## Distance Heavyweight Horses -

Place	Horse	Distance
1	Burren-dah Gladiator	1265
2	Arasarta Narhalinian	1003
3	Ben Mariah	905
4	Eljannah Majid	885
5	Akifa Farras Titan	860
6	Copperkahn Tiara	820
7	Ashbend Perazzi	800
8	Tristram Enforcer	646
9	Mountain Breeze Jack The Ripper	565
10	Dumaresq Buzz	560

## Distance Heavyweight Riders

Place	Rider	Distance
1	Martin Gregson	1265
2	Haydn Fisher	1088
3	Gary Thomas	905
4	Mark Johnson	901
5	Peter Luthy	885
6	Roy Barsby	880
7	Paddy Smith	860
8	Robert Catlin	820
9	John Howe	800
10	Phil Coleman	733

## Points Heavyweight Horses

Place	Horse	Points
1	Burren-dah Gladiator	80.5
2	Arasarta Narhalinian	67
3	Copperkahn Tiara	65
4	Akifa Farras Titan	64
5	Eljannah Majid	59.5
6	Ben Mariah	59
7	Ashbend Perazzi	54.5
8	Garonne Park Walker	42
9	Mountain Breeze Jack The Ripper	41
10	Dumaresq Buzz	36.5
10	Aloha Delegate	36.5

## Points Heavyweight Riders

Place	Rider	Points
1	Martin Gregson	80.5
2	Haydn Fisher	68
3	Robert Catlin	65
4	Paddy Smith	64
5	Peter Luthy	59.5
6	Gary Thomas	59
7	John Howe	54.5
8	Roy Barsby	51.5
9	Stuart Lymbery	44
10	Ian Dreghorn	41

## Points Middleweight Horses

Place	Horse	Points
1	Velona Amadi	97.25
2	Diamond R Boston	69.5
3	Windaroo Devina Glamour	65.5
4	Saradon	52
5	Fenwick Finale	48

6	Stratfield Ghayth	46.5
7	Major Luke	45
8	Kurrajong Shadad	41.5
9	Currowan Mojo	41
10	Conderosa Zeus	40.5

## Points Middleweight Riders - 2012

Place	Rider	Points
1	Allison Knihinicki	115.75
2	Jennifer Gilbertson	98
3	Carol Major	97
4	Jenny Shepheard	73.5
5	Kim Hagon	70.5
6	Rochelle Knihinicki	68.25
7	Tom Bouzianis	62.5
8	Jennifer Annetts	61.5
9	Ben Hudson	57.5
10	Karen Rhodes	46.5

## Distance Middleweight Riders - 2012

Place	Rider	Distance
1	Allison Knihinicki	1845
2	Carol Major	1658
3	Jennifer Gilbertson	1300
4	Rochelle Knihinicki	1203
5	Ben Hudson	1178
6	Kim Hagon	968
7	Tom Bouzianis	965
8	Karen Rhodes	961
9	Jennifer Rogers	885
10	Sonya Ruprecht	883

## Distance Middleweight Horses

Place	Horse	Distance
1	Velona Amadi	1340
2	Stratfield Ghayth	961
3	Windaroo Devina Glamour	960
4	Saradon	928
5	Diamond R Boston	808
6	KY	743
7	Major Luke	730
8	Fenwick Finale	720
9	Malu Vale Embers	648
10	Tristram Hero	565

## Points Lightweight Horses - 2012

Place	Horse	Points
1	Nioka Park Jag	84.75
2	Aloha Byshara	80
3	Shellal Cattle King Flyte	68.75
4	Shakista	65.5
5	Ausden Kon Tiki	59.5
5	Razorback Kadance	59.5
7	Red Legend	54.5
8	Lasaan	54
9	Everon Park Apollo	53.5



10	Aloha Fabian	46
----	--------------	----

### Points Lightweight Riders

Place	Rider	Points
1	Allix Jones	117.75
2	Sue Todd	117.5
3	April Newman	94
4	Julie Brooks	80
5	Wendy Jones	69.75
6	Melanie Anderson	60.5
7	Robin Young	59.5
8	Melissa Attwell	54.5
9	Roz Edmunds	53.5
10	Cherry Cummins	47.5

### Distance Lightweight Riders

Place	Rider	Distance
1	Allix Jones	2060
2	Sue Todd	1908
3	April Newman	1145
4	Wendy Jones	1080
5	Julie Brooks	965
6	Emma McCormack	963
7	Robin Young	908
8	Lydia Thomson	808
9	Shelly Ison	745
10	Melissa Attwell	740

### Distance Lightweight Horses

Place	Horse	Distance
1	Shellal Cattle King Flyte	1043
2	Nioka Park Jag	1020
3	Aloha Byshara	965
4	Razorback Kadance	908
5	Shakista	905
6	Red Legend	740
7	Aloha Fabian	660
8	Ausden Kon Tiki	640
9	Shalacey Bear	600
10	Kerewong Shelfyre	581

### Distance Junior Horses - 2012

Place	Horse	Distance
1	Burren-dah Narla	1220
2	Windradyne Ballerina	1160
3	Sundown Park Cariad	760
4	Warren Park Kiara	560
5	Lilonda Sharjah	541
6	Blakes Heaven Angelico	420
7	Silver Ridge Navarro	400
7	Elrebel Afternoon Delight	400
9	Littlebanks Antwonett	350
10	Booramby Jacob	335

### Distance Junior Riders - 2012

Place	Rider	Distance
1	Shantel Nagle	1800
2	Tayla Warren	1100
3	Tiarna Young	1040
4	Andrew Mackinder	760
5	Britanny Johnson	690
6	Sorsha Stuart-Rokvic	660
7	Tahnaya Mercieca	500

8	Mia Bodewes	416
9	Ellen Vine	416
10	Olivia De Gruchy	320

### Points Junior Horses - 2012

Place	Horse	Points
1	Burren-dah Narla	89
2	Windradyne Ballerina	87.5
3	Sundown Park Cariad	65
4	Lilonda Sharjah	32.5
5	Warren Park Kiara	31.5
6	Silver Ridge Navarro	29
7	Elrebel Afternoon Delight	21.5
8	Blakes Heaven Angelico	21
9	Coolinda Park Louisville	19.5
10	Blake's Heaven Ventura	18.5

### Points Junior Riders - 2012

Place	Rider	Points
1	Shantel Nagle	119.5
2	Tiarna Young	79
3	Andrew Mackinder	65
4	Tayla Warren	59
5	Britanny Johnson	44.5
6	Sorsha Stuart-Rokvic	31.5
7	Ellen Vine	29
8	Tahnaya Mercieca	22
8	Olivia DeGruchy	22
10	Cybele Coddington	15
10	Zac Hooper	15
10	Mia Bodewes	15



# NSW One Horse One Rider

<b>HEAVYWEIGHT</b>			
<b>PLACE</b>	<b>NAME</b>	<b>HORSE</b>	<b>DISTANCE</b>
1	Martin Gregson	Burren-dah Gladiator	1265
2	Haydn Fisher	Arasarta Narhalinian	1003
3	Gary Thomas	Ben Mariah	905
4	Peter Luthy	Eljannah Majid	885
5	Paddy Smith	Akifa Farras Titan	860
6	Robert Catlin	Copperkahn Tiara	820
7	John Howe	Ashbend Perazzi	800
8	Keith Nagle	Tristram Enforcer	646
9	Ian Dreghorn	Mountain Breeze Jack The Ripper	565
10	Roy Barsby	Dumaresq Buzz	560

<b>MIDDLEWEIGHT</b>			
<b>PLACE</b>	<b>NAME</b>	<b>HORSE</b>	<b>DISTANCE</b>
1	Allison Knihinicki	Velona Amadi	1260
2	Karen Rhodes	Stratfield Ghayth	961
3	Carol Major	Saradon	928
4	Jennifer Gilbertson	Windaroo Devina Glamour	880
5	Kim Hagon	Diamond R Boston	808
6	Fiona Meller	Malu Vale Embers	648
7	Carol Major	Major Luke	640
8	Jennifer Rogers	Tristram Hero	565
9	Rochelle Knihinicki	KY	563
10	Jo Davis	Wicketly Good	484

<b>LIGHTWEIGHT</b>			
<b>PLACE</b>	<b>NAME</b>	<b>HORSE</b>	<b>DISTANCE</b>
1	Julie Brooks	Aloha Byshara	965
2	Robin Young	Razorback Kadance	908
3	Sue Todd	Shakista	905
4	Wendy Jones	Nioka Park Jag	760
5	Melissa Attwell	Red Legend	740
6	Melanie Anderson	Ausden Kon Tiki	640
6	Allix Jones	Shellal Cattle King Flyte	640
8	Sue Todd	Shalacey Bear	600
9	Shelly Ison	Aloha Fabian	580
10	Neroli Mitchell-Cooper	Bilbo	560

<b>JUNIOR</b>			
<b>PLACE</b>	<b>NAME</b>	<b>HORSE</b>	<b>DISTANCE</b>
1	Shantel Nagle	Windradyne Ballerina	1160
2	Tiarna Young	Burren-dah Narla	960
3	Andrew Mackinder	Sundown Park Cariad	760
4	Tayla Warren	Warren park Kiara	560
5	Tayla Warren	Lilonda Sharjah	460
6	Sorsha Stuart-Rokvic	Blakes Heaven Angelico	420
7	Shantel Nagle	Elrebel Afternoon Delight	400
7	Ellen Vine	Silver Ridge Navarro	400
9	Mia Bodewes	Booramby Jacob	335
10	Tahnaya Mercieca	Littlebanks Antwonett	260
10	Cybele Coddington	Burren-dah Narla	260

# National Pointscore

## Heavyweight Horse

### Points

Burren-dah Gladiator (NSW)	80.5
Rage On (SA)	78.75
Arasarta Narhalinian (NSW)	67
Ruby Running Bare (TAS)	65.25
Copperkahn Tiara (NSW)	65
Akifa Farras Titan (NSW)	64
Eljannah Majid (NSW)	59.5
Ben Mariah (NSW)	59
Le-Ma Park La Gold (QLD)	58.5
Taylors Glen Renegade (VIC)	55.5

### Distance

Burren-dah Gladiator (NSW)	1265
Arasarta Narhalinian (NSW)	1003
Ruby Running Bare (TAS)	915
Ben Mariah (NSW)	905
Eljannah Majid (NSW)	885
Rage On (SA)	884
Akifa Farras Titan (NSW)	860
Taylors Glen Renegade (VIC)	821
Copperkahn Tiara (NSW)	820
Lee-Ma Park La Gold (QLD)	810

## Middleweight Horse

### Points

Velona Amadi (NSW)	97.25
Cheraz Silver Pocket (QLD)	81
Poseidon Moon (WA)	79.5
Diamond R Boston (NSW)	69.5
Windaroo Devina Glamour (NSW)	65.5
Brookleigh Ricardo (QLD)	65.25
Malali (QLD)	55
Sir James (WA)	53.5
Saradon (QLD)	52
Fenwick Finale (NSW)	49.5

### Distance

Velona Amadi (NSW)	1340
Poseidon Moon (WA)	985
Stratfield Ghayth (NSW)	961
Windaroo Devina Glamour (NSW)	960
Saradon (NSW)	928
Warabong Sparkling Beauty (QLD)	843
Diamond R Boston (NSW)	808
Sir James (WA)	764
Rivergum Ripper (TAS)	750
Ky (NSW)	743

## Lightweight Horse

### Points

Nioka Park Jag (NSW)	101.75
Shellal Cattle King Flyte (NSW)	92.25
Shalacey Bear (NSW)	92
Ausden Kon Tiki (NSW)	85
Aloha Bshara (NSW)	80
Shakista (NSW)	65.5

Deep Forest Orah (WA)	64
Gemma (QLD)	62
Orchid Park Silver Mecca (WA)	61.5
Trinity (QLD)	60

### Distance

Shellal Cattle King Flyte (NSW)	1283
Nioka Park Jag (NSW)	1180
Shalacey Bear (NSW)	1160
Trinity (QLD)	980
Aloha Bshara (NSW)	965
Ausden Kon Tiki (NSW)	960
Razorback Kadance (NSW)	908
Shakista (NSW)	905
Orchid Park Silver Mecca (WA)	889
Syrahbia (VIC)	853

## Junior Horse

### Points

Windradyne Ballerina (NSW)	92.25
Burren-dah Narla (NSW)	89
Sasam (QLD)	88.5
Sundown Park Cariad (NSW)	59
Splendacrest Ulysses (QLD)	54
Highland View Jess (TAS)	50.5
King Park Aberdeen Pelion (TAS)	48.5
Golden Treasure (WA)	45
Beer Street Takone (TAS)	42
Beer Street Banshee (TAS)	41

### Distance

Windradyne Ballerina (NSW)	1240
Burren-dah Narla (NSW)	1220
Sasam (QLD)	960
Highland View Jess (TAS)	900
Splendacrest Ulysses (QLD)	820
Sundown Park Cariad (NSW)	760
Golden Treasure (WA)	691
King Park Aberdeen (TAS)	660
Bellawongarah Holly (TAS)	655
Agape Evezra (QLD)	562
Luciana (QLD)	562

## Heavyweight Rider

### Points

Jody Smith (SA)	81.75
Martin Gregson (NSW)	80.5
Craig Wall (TAS)	71
Haydn Fisher (NSW)	68
Gregg Fields (QLD)	67
Jeremy Ford (TAS)	65.25
Robert Catlin (NSW)	65
Paddy Smith (NSW)	64
Jaime Mansbridge (QLD)	60
Peter Luthy (NSW)	59.5

### Distance

Martin Gregson (NSW)	1265
Haydn Fisher (NSW)	1088
Mark Johnson (NSW)	1061



## National Pointscore

Jaime Mansbridge (QLD)	970	Julie Brooks (NSW)	80
Jody Smith (SA)	964	Wendy Jones (NSW)	74.75
Jeremy Ford (TAS)	915	Bobbi Butler (QLD)	74
Gary Thomas (NSW)	905	Judy Battams (QLD)	73
Gregg Fields (QLD)	901		
Craig Wall (TAS)	900	Distance	
Peter Luthy (NSW)	885	Sue Todd (NSW)	2468

### Middleweight Rider

#### Points

Alison Knihinicki (NSW)	117.25
Jennifer Gilbertson (NSW)	98
Carol Major (NSW)	97
Natasha Willemse (QLD)	88
Debbie Grull (TAS)	87
Frances Overheu (WA)	79.5
Matthew Sample (QLD)	76.75
Jenny Shephard (NSW)	73.5
Jennifer Annetts (NSW)	71
Kim Hagon (NSW)	70.5

#### Distance

Alison Knihinicki (NSW)	1845
Carol Major (NSW)	1658
Debbie Grull (TAS)	1475
Jennifer Gilbertson (NSW)	1300
Ben Hudson (NSW)	1278
Caroline Fitzgerald (QLD)	1273
Gail Hamilton (QLD)	1246
Linda Tanian (VIC)	1226
Rochelle Knihinicki (NSW)	1203
Akhmed Pshunov (QLD)	1191

### Lightweight Rider

#### Points

Sue Todd (NSW)	165
Allix Jones (NSW)	158.25
Nicola Robinson (VIC)	115.25
Melissa Longhurst (QLD)	112.25
April Newman (NSW)	94
Melanie Anderson (NSW)	86

Sue Todd (NSW)	2468
Allix Jones (NSW)	2460
Nicola Robinson (VIC)	1856
Melissa Longhurst (QLD)	1285
Trish Smith (TAS)	1235
Wendy Jones (NSW)	1160
April Newman (NSW)	1145
Sonia Hodgetts (TAS)	1140
Jen Clingly (TAS)	1075
Jodi Smith (TAS)	1075

### Junior Rider

#### Points

Shantel Nagle (NSW)	124.25
Alice Mitchell (TAS)	118
David Anderson Jnr (QLD)	95
Harrison Berg (VIC)	88.5
Tiarna Young (NSW)	79
Sarah Parker (TAS)	77.75
Samantha Noble (VIC)	72
Lainie Zischke (QLD)	71
Andrew Mackinder (NSW)	65
Hannah Terry (QLD)	61

#### Distance

Shantel Nagle (NSW)	1880
Harrison Berg (VIC)	1649
Sarah Parker (TAS)	1475
Tayla Hadzi (QLD)	1351
David Anderson Jnr (QLD)	1302
Alice Mitchell (TAS)	1300
Tayla Warren (NSW)	1100
Lainie Zischke (QLD)	1043
Tiarna Young (NSW)	1040
Grace Huxtable (TAS)	980

## New Members

Bianca Watman 23707  
 Neil Seagrim 23708  
 Lauren Howson 23709  
 Rebecca BrieAnn Morris 23710  
 Bree Hollingsworth 23711  
 Luka Curtis 23712

Dalgety  
 Brindabella  
 Lavington  
 Mount Hutton  
 Bargo  
 Oakdale

# National One Horse / One Rider

## Heavyweight

1.	Burren-dah Gladiator / Martin Gregson (NSW)	1265
2.	Arasarta Narhalinian / Haydn Fisher (NSW)	1003
3.	Ruby Running Bare / Jeremy Ford (TAS)	915
4.	Ben Mariah / Gary Thomas (NSW)	905
5.	Eljannah Majid / Peter Luthy (NSW)	885
6.	Rage On / Jody Smith (SA)	884
7.	Akifa Farras Titan / Paddy Smith (NSW)	860
8.	Copperkahn Tiara / Robert Catlin (NSW)	820
9.	Ashbend Perazzi / John Howe (NSW)	800
10.	Taylors Glen Renegade / Melissa Cawthan (VIC)	741

## Middleweight

1.	Velona Amadi / Alison Knihinicki (NSW)	1260
2.	Poseidon Moon / Frances Overheu (WA)	985
3.	Stratfield Ghayth / Karen Rhodes (NSW)	961
4.	Saradon / Carol Major (NSW)	928
5.	Windaroo Devina Glamour / Jennifer Gilbertson (NSW)	880
6.	Warabong Sparkling Beauty / Gail Hamilton (QLD)	843
7.	Diamond R Boston / Kim Hagon (NSW)	808
8.	Sir James / Anita Lunt (WA)	764
9.	Rivergum Ripper / Tania Jago (TAS)	750
10.	Major Luke / Carol Major (NSW)	730

## Lightweight

1.	Shalacey Bear / Sue Todd (NSW)	1160
2.	Shellal Cattle King Flyte / Allix Jones (NSW)	1040
3.	Trinity / Jocelyn Weise (QLD)	980
4.	Aloha Byshara / Julie Brooks (NSW)	965
5.	Ausden Kon Tiki / Melanie Anderson (NSW)	960
6.	Razorback Kadance / Robin Young (NSW)	908
7.	Shakista / Sue Todd (NSW)	905
8.	Orchid Park Silver Mecca / Lyn Summerfield (WA)	889
9.	Syrahbia / Jane McLaughlin (VIC)	853
10.	Sterling Soldier / Nicola Robinson (VIC)	850

## Junior

1.	Windradyne Ballerina / Shantel Nagle (NSW)	1240
2.	Burren-dah Narla / Tiarna Young (NSW)	960
3.	Sundown Park Cariad / Andrew Mackinder (NSW)	760
4.	Highland View Jess / Grace Huxtable (TAS)	740
5.	Golden Treasure / Jezney Thomas (WA)	691
6.	King Park Aberdeen Pelion / Sarah Parker (TAS)	660
7.	Bellawongarah Holly / Amelia Napier (TAS)	655
8.	Agape Evezra / Christina Simpson (QLD)	562
9.	Warren Park Kiara / Tayla Warren (NSW)	560
10.	Carama Morocco / Jessyca Dakin (QLD)	532



# Zone One Training Weekend

## 40km Ride, 15km Social Ride & 5km Introductory Ride

**Weekend 16th & 17th February 2013**

The Zone One Committee will be running a two-day event on the weekend of Saturday 23rd February, 2013 and Sunday 24<sup>th</sup> February 2013. On each of the two days there will be a 40km ride, a 20km Social Ride and a 5km Introductory Ride. The ride base will be as usual at the Upper Colo Reserve, Upper Colo - located approximately 12kms from the Putty Road on the beautiful Colo River, so bring your swimmers as it's a great place to cool off on a hot day.

### **SATURDAY**

The office will open at 10.00am, vetting to commence at 10.30am with the ride to start at 1.00pm.

The 40km ride will head along Upper Colo Road, turning left onto Comleroy Road, with a good up-hill run to the first check point at the power lines. Continuing along Comleroy Road and turning right onto Mountain Lagoon Road (now the super highway of Colo) but don't underestimate the climb to the top. The Mountain Lagoon checkpoint will have water and refreshments for you and your horse. From there you turn right into Sams Way and then left into Gaspers Track to the NPWS gate where there will be a checkpoint and riders will be sent out for 2 ½ Kms to a turn around, before heading back and turning left onto Gaspers Track and then descending Ward's Track to the fire station for a rest and water for the horses, before turning right onto Upper Colo Road and heading back into base.

We will be operating a heart rate gate at the half way mark at Mountain Lagoon. All horses will have their pulse taken and must meet the required HR (which will be set by the head vet, giving consideration to the weather conditions on the day) before heading off. Strapping water and sponges will be available.

The 20km Social Ride and 5km introductory rides will start around 2.00pm and 2.30pm respectively. The 20km Social Ride will be turning right off the bridge out onto the Upper Colo Road which will lead you to a turn around check point and back into base again. The track is relatively flat and easy going.

The 5km Intro Ride will take you in the same direction as the other rides, there will be a turn around check point and back into base again. A great easy ride - and walk for anyone supervising the budding endurance rider.

### **SUNDAY**

The office will open 6.00am with vetting starting at 6.30am. The 40km ride will start at 8.30am and will follow the same course as Saturday. The 20km Social Ride and 5km introductory rides will start around 10am and 10.30 respectively and will follow the same course as Saturday.

The wonderful volunteers from the Upper Colo Fire Brigade will also be providing the canteen goodies on both days, so please support them.

There will be completion prizes awarded at the presentation on each day.

Volunteer track stewards and TPRs would be greatly appreciated – please let Bronwyn Monahan know if you are able to assist us on either day on [bronwynmonahan@yahoo.com.au](mailto:bronwynmonahan@yahoo.com.au)

40km Ride - \$60 for Members add \$10 for Non-Member NSWERA Day Membership  
Social Ride - \$30 for Members add \$5 for Non-members NSWERA Day Membership  
Introductory Ride - \$15 for Members add \$5 for Non-members NSWERA Day Membership

Please contact our Ride Secretary, Marlee Turnbull at [marleeturnbull@y7mail.com](mailto:marleeturnbull@y7mail.com) or 0432 074 995 for further information. Pre-nominations would be appreciated so that we can arrange enough vets on the day as well as allowing the canteen to provide enough food for you all.

Camping overnight is at your own discretion, your campsite booking and \$6 camping fee must be arranged by you directly with council. The Zone One Committee is not responsible for the collection of this fee.

## **Ride where the Olympians ride**

# **Horsley Park**

9th March 2013

In conjunction with the Arab Horse Society, Zone One will be holding a promotional 40km Training ride and a 20km Social ride on Saturday, 9th March at the Sydney International Equestrian Centre at Horsley Park.

The 2013 Australian National Championships will be held at the Equestrian Centre from the 6th till the 10th of March.

The course will run around the Equestrian Centre around the cross country course, through the steeplechase course and around the adjoining Western Sydney Regional Parklands.

The office and pre-ride vetting will open from 8am on Saturday, 9th with the ride starting at 12 noon. Volunteer track stewards and TPRs would be greatly appreciated.

Entrance to the centre is from Saxony Road which runs off Wallgrove Road.

The Arab Society has advised that the following conditions apply:-

- There is no overnight camping allowed at the SIEC grounds unless prior arrangements have been made with the Arab Society.
- Dogs are allowed on SIEC grounds but they must be restrained on a leash at ALL TIMES.
- An exception has been made for this event to allow endurance riders to use portable yards. These yards must fit within the guide lines set by Equestrian Australia. Please ensure your yard is secure and all point of attachment to your vehicle or to another yard, once erected.
- Horses should not be left unsupervised while in temporary yards.
- NO ELECTRIC TAPE is to be used.

Please be aware that the venue has a number of roads close to the area set aside for the Endurance Ride therefore a secure yard is imperative.'

Ride fee will be \$45 plus a \$7.50 day fee per horse. \$10 day membership fee applies to any non- members.

Come and support your sport and show other Arabian lovers what Endurance riding is all about.

For any more information or if you can help on the day, please contact Charlie Gauci on 0245670567 after dark.

Please pre-nominate asap either by phone to Charlie or email

[charlie@tracer.net.au](mailto:charlie@tracer.net.au)





*Lachlan Endurance Riders Clubs'*

**BUMBALDRY**  
**TRAINING RIDE WEEKEND**  
**March 16 & 17, 2013**

Introducing the fabulous new riding location of Bumbaldry, 26km west of Cowra.

Come and join us for a weekend of riding in the beautiful hills of the Bumbaldry / Broula area. With the course travelling over quiet dirt roads and sandy trails, through open paddocks and shady bushland, along with a tranquil ride base with the most amazing views of this picturesque district, we have it all.

Saturday we will be holding a 40km training ride and 20km social ride. Making the most of the cooler temperatures of late afternoon and early evening we are looking to start the 40km at 2pm and the 20km social at 2.30pm, or a little later depending on the days temperature. The office will open at 12.30pm, with vetting underway at 12.45pm. The trails will have a mixture of flat open roads and paddocks and undulating bush tracks. A good mixture to progress your horses fitness ready for a great 2013 of riding.

Saturday evening relax with a cool ale, enjoy a few tunes, swap some stories around camp and enjoy the cool breeze that blows across ride base.

Sunday will see another 40km training ride and 20km social ride. For riders camping over we hope to have you out on course nice and early to make the most of the cool conditions, but will also accommodate riders wishing to vet-in on Sunday morning with all horses to be out on course by 8am.

Our ride base is accessible to all size rigs and will be well sign posted.

Approaching from the East - follow the Mid-Western highway through Cowra, over the river, heading west following signs to Grenfell for 23kms. You will turn right off Mid-Western highway onto Kangaroooby Road and travel 5kms to our ride base.

From the South - following either Lachlan Valley Way (Boorowa Rd) or Olympic Highway (Young Rd), you will come to the T-junction with Mid-Western highway (on the western side of Cowra so no need to cross the river). Turn left heading west towards Grenfell and follow as above.

From the North - you'll enter Cowra on the Canowindra Rd, turn right at the T-junction with Lachlan St which will put you at traffic lights. Turn right, over the river, heading west to Grenfell and again follow as above.

And from the West - follow Mid-Western highway for 31kms from Grenfell turning left into Kangaroooby Rd and come on down to the ride base.

Please be mindful that in March we may still have fire restrictions, so if you wish to strap with warm water think about water heating alternatives. A canteen will be available during the weekend with cold drinks, steak sandwiches and all the usual goodies.

Looking forward to introducing you to a great new ride location (and watch out for the Bumbaldry drop-bears)!

Feel free to call Helen Lindsay 6342 9289 or Tina Walker on 6345 5882 to find out more about this gem of a ride.

# Cedar Ridge Easter Carnival

29<sup>th</sup> March - 1<sup>st</sup> April 2012

## FEI and AERA Events

The Cedar Ridge Endurance Centre will be hosting a number of events over the Easter Long Weekend. For those who have not competed in the events at the Cedar Ridge Endurance Centre before, Oberon is a 2 hour drive from the Hawkesbury and Penrith, 3 hour drive from Sydney Airport and Canberra, 40 Minutes before Bathurst. The address is 1304 Beaconsfield Road Oberon; please use the NSWERA website for ride base locator to help you with directions.

### The events for the weekend consist of:

#### Friday:

Pre-ride vetting for Saturdays events

#### Saturday:

FEI 120km\*\*

AERA 80/160km elevator (2 day 80km)

AERA 80km, 40km, 20km

#### Sunday:

FEI 80km\*

AERA 80/160km elevator (2nd day)

AERA 80km, 40km, 20km



The vetting system for all AERA events will be Standard AERA Vetting, with the FEI events using the FEI Vet Gate Into Hold system.

Pre Ride vetting for the 40km and 20km events can be done the morning of the event.

An experienced and impressive team of 5 vets will be in attendance for the weekend.

There are hot showers and flushing toilets and plenty of water for the horses but please bring your own drinking water. A limited number of Powered sites are available for \$20 please book these when you send through your pre-nominations.

A canteen will be available for the weekend.

Easter egg hunt will be on again this year and a colouring in competition, prizes will be awarded.

**Pre-nominations for the AERA events will need to be in by the 25<sup>th</sup> of March**, please send these to [prenoms@cedarridgestables.com.au](mailto:prenoms@cedarridgestables.com.au)

**FEI nominations are due by the 18<sup>th</sup> of March**, please contact [info@cedarridgestables.com.au](mailto:info@cedarridgestables.com.au) for entry forms. Full payment must accompany each nomination. Entry fees for the 120\*\* \$250, 80km\* \$200. All details are on the entry form.

Check out the Cedar Ridge Endurance Centre Facebook page for updates.



# Tooraweenah Endurance Club Ride

Tooraweenah Endurance Club would like to invite you to our 2013 ride which we are having on the weekend of 19<sup>th</sup> and 20<sup>th</sup> of April.

Come along to our friendly club and enjoy the spectacular views of the famous Warrumbungle Mountains and the hospitality of the friendly town of Tooraweenah.



Tooraweenah is situated in a valley west of the Warrumbungle Mountains at Coonabarabran. We are putting on an 80km and 40km ride and on Saturday a kid's club social ride of 7.5 km , all the participants last year had lots of fun on the social ride.

We have hot showers, flushing toilets, and a good flat ride base, some firewood will be provided. Hot meals, and not forgetting our delicious sweets will be provided on Saturday night, as well as our usual FREE HOT MEAL provided for every rider.

Also there will be hot food available from breakfast on Sunday by our lovely local ladies from the CWA.

**RIDE TIMES: SATURDAY – VETTING FROM 1 PM AND THE  
7.5 KM KIDDIES/NEWBIES SOCIAL RIDE – STARTS AT 1PM**

**RIDE TIMES: SUNDAY                      Prices – 80km \$80.00**

**80KM –STARTS 5AM    40km \$40.00**

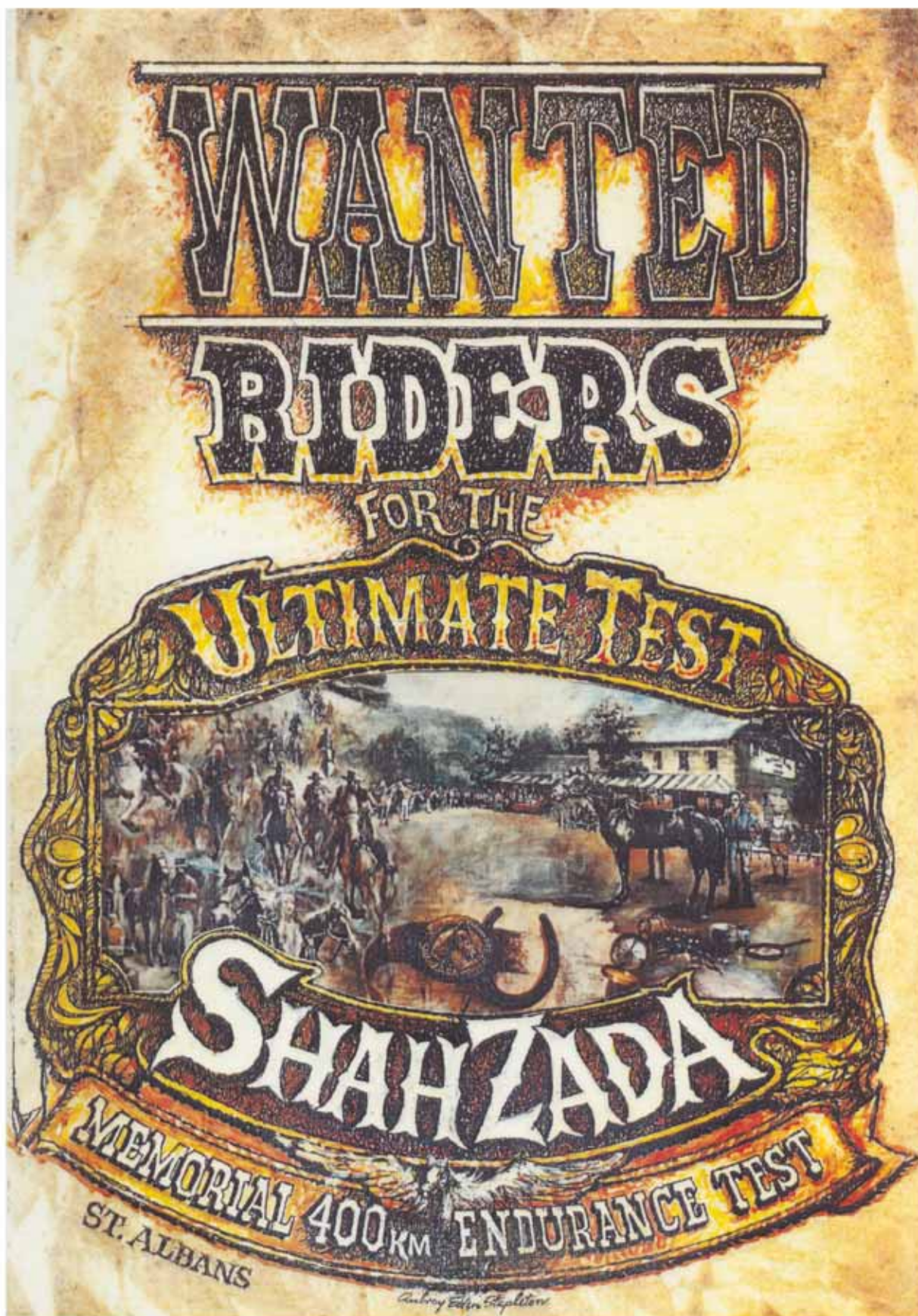
**40km – STARTS 7AM    Social \$20.00**

So bring your horse and the kids pony for lots of family fun!

Hope to see you all there for a great weekend!

**Publicity Officer - Tooraweenah Endurance Club**





The 2013 400km Shadzada & the 120km Mini Marathon will be held between the 26-8-13 to the 30-8-13. For more information please contact Sue Todd on (02) 6379 7218. Email: [suetodd@activ8.net.au](mailto:suetodd@activ8.net.au)





# Mudjee Endurance Riders Association Inc.

## FABULOUS FORTIETH RIDE CELEBRATIONS 25 TO 26 MAY 2013

How the ride has changed in all these years!

The first ride in 1972 was unaffiliated with the AERA. It was run by the Central Tablelands Equestrian Group and started from the Mudjee Saleyards which was the ride base for some 25 years. The original course was 80 miles, all checkpoints were 'moving' and there were about 70 gates to be manned. There was a 3am staggered start at half minute intervals, with seventeen entries but just fourteen starters.

The course travelled over gravel roads, hard stony mountainous terrain, and areas of thick bush. It was more of a marathon than today's ride. There were comments from visiting riders that the course was tougher than the Quilty.

The ride was won by Kandos rider Terry Rohy riding his thoroughbred mare Babe in the



Chery Mackinder at an early Mudjee ride

fast time of 6 hours 4 ½ minutes, which compares to just over 20kph today. Col Adams, Vice President of the AERA presented the trophies.

John King was our longest serving President and Ray Gooley has been our head vet for an incredible 36 years. It wasn't until 1982 that the club became Mudjee Endurance Riders and the distance was gradually reduced until in 1993 it became 80 kms. After moving to three different locations the ride base has been at Cooyal for eight years with a much easier course. Ride entry numbers have increased dramatically as well, with a staggering 183 riders in 2004.



A very young Eric Robinson at one of the Mudjee rides receiving his award.

And so to 2013.

### Ride Details

Saturday, 25 May – 20km social ride starts 1pm

Sunday, 26 May – 80km ride starts 6am; 40km ride starts 7am

Vetting for the social ride starts from 11am Saturday, office open at 11am. Vetting for the 80km and 40km rides starts from 1pm Saturday.

Camping is open from midday on Friday. The canteen is open from lunchtime Saturday until Sunday afternoon. The usual delicious two course dinner will be available on Saturday night and will include a slice of our '40<sup>th</sup> birthday cake'. The cost for dinner is \$20, and \$15 for kids under 14. When pre-nominating please indicate if you would like dinner. Please pre-nom by Monday 20 May.

There will be a special commemorative 40<sup>th</sup> anniversary buckle, plus all the usual trophies and a major lucky draw, so stay for the presentations for a chance to win. We hope some notable riders from the early days will help with presenting the awards.

### The Course

The course is our usual 83kms and very suitable for novice horses. The first leg is 40km along country lanes, paddocks and fire trails. This is the leg for the trainer. The social ride will travel 10km of this leg to a turnaround. The second leg of 43km is the same as the first leg for the first 10km then onto bush tracks, a private road and finally down the same fire trails to base.

Cooyal is a small community. There is no fuel available, no shop....but there is a pub down the road! There are good amenities at the ride base but no showers.

To get there take the Ulan Road from Mudgee (also known as the Cassilis Road) heading north for 10km, turn right into Wollar Road. Continue for about 15km and the Cooyal Hall ride base is on the left.

If travelling from Merriwa turn into Ulan Road off the Golden Highway and travel about 59km past the mines at Ulan, through Cooks Gap, and then 200 metres past the Mud Hut Creek Road, turn left into Linburn Lane. Continue to the end of Linburn Lane, turn right into Wollar Road and you are there.

The Mudgee Endurance Riders would like to give our heartfelt thanks to all our wonderful sponsors over the years, to our tireless vetting teams headed by Ray Gooley, to the bushfire brigades for manning checkpoints, progress associations, volunteers, office staff and property owners. The list is endless and runs into hundreds of supporters. And then there are the riders and their crews who keep coming year after year.

We thank you all and hope to make this a ride to remember.

For further enquiries contact  
Mette Sutton on 0400 308626  
or  
[mette.sutton@bigpond.com](mailto:mette.sutton@bigpond.com)

*"We hold the wealth no rich  
men find  
The gems no Kings are worth.  
Our throne the racing  
Rosalind  
Our realm – the waking  
earth."  
Will Ogilvie*

Good riding  
Pat Dickinson  
for the MERA Committee



Long time vet, Ray Gooley.



## BROOKVALE 30<sup>th</sup> ANNIVERSARY RIDE

The National Capital ("Brookvale") Endurance Ride turned 30 this year. Except for a few occasions when the ride had to be cancelled or moved into Canberra, it has been based at the Blundell family's "Brookvale" property every year since 1982.

Anniversary celebrations, held in conjunction with the ride on 27-28 October, included a spit-roast dinner, birthday cake and a display of Brookvale ride history comprising maps, photos, ride results, stories and other memorabilia. A DVD containing over 800 photos spanning the history of the ride and some video footage of the 1986 ride were screened at the dinner. Much local endurance riding history is also on the ACT Endurance Riders Association website (<http://www.actera.org.au/>).

This year, the ride returned to Two Sticks Road, part of the old course that has not been used for several years: the section forming part of the course for the 40km ride and the second leg of the 80km ride was last used in 1993.

The new route, along Two Sticks Road and Blue Range Road in Brindabella National Park, was very scenic but involved a steady climb from 600 to 1200 metres in just over 20km. The first leg, along Doctors Flat Road and the Scorgies and Maginot fire trails, was unchanged: it is all up and down and reaches 900 metres on four occasions. The 80km course, overall, was therefore quite testing.

**Top:** Karen Rhodes, winner of the Allen Blundell Memorial Trophy, with Judy Blundell (Photo by Roz Edmunds).

**Bottom Right:** First Junior, Cybele Coddington (Photo by Roz Edmunds).

**Bottom Left:** First Heavyweight, Frank Mollema (Photo by Roz Edmunds).



Entries were down a little, with only 44 in the 80km ride, but 19 in the 40km training ride and 26 in the 20km social ride brought the total number of riders to 89. The challenge of the new second leg was reflected in the completion rate for the 80km ride, with 10 of the 44 horses vetted out, eight on heart rate. Two horses were withdrawn: one before the start because the rider was ill and the other because the rider wanted to only

do the first leg.

Jenny Shepheard and the black Arabian stallion Currowan Mojo won the ride in 4 hours 46 minutes, only five minutes longer than their winning time last year. Jenny's two successive wins were a fitting end to the first 30 years of the Brookvale ride, which began with successive wins by Allan Robertson and Prancer in 1982 and 1983. Evan Drain-Shepheard had ridden the whole course with Jenny but his horse unfortunately did not recover sufficiently and was vetted out on heart rate at the final check.

Jennifer Gilbertson on Kurrajong Shadad was second Middleweight and Mitchell Ravallion on Danjera Jed third. First heavyweight was Frank Mollema on Littlebanks Crystal Wings, followed by Peter Norman on Tallaganda Downs Natifa and Scott Davenport on Alhambra Pierrot. The lightweight placegetters were

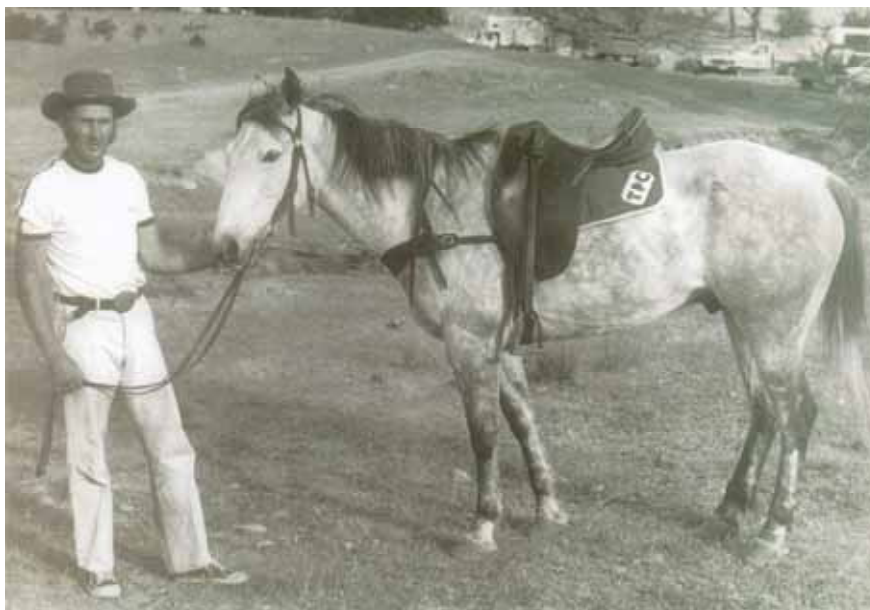
April Newman on Lasaan, Shelly Ison on Aloha Fabian and Amanda Apperley on Jon De Le Jasper. The junior division was won by Cybele Coddington on Burren-dah Narla, with Olivia De Gruchy on Blake's Heaven Ventura second and Shantel Nagle on Conderosa Eternity third.

The first-placed horses also won the Best Conditioned Horse awards in each of the four divisions. Their riders each went home with a rug for the first placing and a clock and a \$100 voucher from Equine Miracle for the best conditioned horse.

The Allen Blundell Memorial Trophy was won by Karen Rhodes, who completed the ride on her six-year-old Arabian gelding Stratfield Ghayth. The Bruce Neal Trophy for junior riders was awarded to Olivia De Gruchy, riding Blake's Heaven Ventura.



Some of the participants in the original "Brookvale" ride who returned for the anniversary celebration. L to R: Allan Robertson, Richard Chapman, Searle Johnston, Bryan Kidman, Judith Perkins and Kath Dyason. (Photo by Uros)



Three riders (Fia Hasko-Stewart, Jeremy Banwell and Marty Moran) secured their fifth National Capital buckles. Several, who had already reached that milestone, added another to their total: they included Shelly Ison, Jennifer Gilbertson, Karen Rhodes, Talea Hasko-Stewart, Mary Hollingsworth and Peter Norman. Shelly's 14 buckles will take many years to equal.

Most of the participants in the shorter rides were successful, with 17 of the 19 training riders and 22 of the 26 social riders completing successfully. The completion

The 1982 winners, Allan Robertson and Prancer (Prancer was also Fittest Horse).



award for the training riders was a water bottle and for social riders a magnet with the silhouette of horse and rider against the Parliament House flagpole that is featured on the buckle.

Six of the original 39 riders returned to Brookvale for the 30<sup>th</sup> anniversary celebrations. They were the winner, Allan Robertson, second place-getter Bryan Kidman, fourth Lightweight Judith Perkins and three of the 23 riders who were unsuccessful in 1982: Kath Dyason, Marilyn Payne and Searle Johnston. Searle, who became the first rider ever vetted out of the National Capital Ride when his horse Shinda was found to be lame at the pre-ride check in 1982, completed the 40km



**First Lightweight, April Newman (Photo by Roz Edmunds).**

**First Middleweight and ride winner, Jenny Shephard, receiving her trophy rug from ACTERA President Michelle O'Leary (Photo by Roz Edmunds).**

**Olivia De Gruchy and Blake's Heaven Ventura. Photo by Andrew Hennell.**

training ride this year on his endurance horse Boris.

Denise Horsfall and her daughter Kelly, who were respectively third Lightweight and second Junior in 1982, had planned to be at Brookvale for the anniversary celebrations and Denise had intended to take part in the 20km social ride. Instead, Denise spent the weekend in Canberra Hospital having surgery to repair a broken hip, the result of being knocked over by a horse a few days earlier. We wish Denise a speedy recovery and hope to see her riding at Brookvale next year.

Richard Chapman, who was the head vet at Brookvale in 1982 and for many years after, also took part in the celebrations. Helen Thompson deserves a special mention for her marathon effort in baking and decorating 12 chocolate birthday cakes which were



served at the dinner and at the presentations.

Entrants in this year's three rides included several people who have been riding at Brookvale since the 1980s or early 1990s (Colleen Clancy, Stuart and Anne Lymbery, John Robertson, John Symons, Kristen



Proudfoot, Keryn Kefous, Jennifer Gilbertson, Ray and Karen Rhodes, Peter Norman and Shelly Ison).

Other riders from the early years who came back for a visit included Carol Sparkes, Gillian Petersohn, Robyn Hadlow, Nicki Mokhiza (Ogilvie), Matt Schunke and Simon Bain. Several members of the Blundell family attended the presentations. Mrs Judy Blundell, wife of the late Allen Blundell, presented the Allen Blundell Memorial Trophy.

The ACT Endurance Riders Association gratefully acknowledges the support of the Blundell family over the 30 years of the ride. We also thank the other property owners (including Taits, Webbs, Waterfords, Bill Martin and Bridget Brown) who kindly allow us to use their land as part of the ride course.

We greatly appreciate the support of the Snowy Zone and the local businesses that sponsored our ride this year: Bendora Arabians, Equine Miracle, Haycocks Saddlery, Horseland and The Chaffman.

ACTERA's resources were spread very thin this year as we had to provide our own communications (due to the ride coinciding with a major cycling event to which WICEN has an ongoing commitment) and our own canteen.

We could not have run the ride without the many volunteers who helped at the base and on the course. We also appreciated the generous help of some riders with dismantling and packing up on Sunday.

Our two photographers, Andrew Hennell and Uros, provided an excellent photographic record of the 30<sup>th</sup> anniversary ride: Andrew taking photos of the riders on-



course and Uros capturing the action at the ride base.

Andrew's photos, which include participants in all three rides, can be viewed on his website <http://photo.hennell.com.au/>.

Top Right: Bryan Kidman on Pigslops.

Top Left: Judith Perkins on Part Arab Razzle Dazzle), Jan Neal on Quarter Horse Bruven Champ and Alison Guy (now Hudson) on Australian Stock Horse Soft Breeze. One in three was about the proportion of Arabs to other horses in the 1982 ride.

## Notes on NSW ERA Meeting held 14 September 2012

Present: Tom Perkins Snr (Chairman), Gay Bonham, John Howe, Steve Roberts, Greg Moore (Zone 1), Gary Tweedie, Tom McCormack,

Apologies: Melissa Attwell (Zone 2), Haydn Fisher, Sonya Ruprecht, Marlee Turnbull, Carol Griffiths, Belinda Hopley (Snowy Zone),

In attendance: Helen Rich (minutes), Neil Clarkson, (6.50), Ron Males (6:54), Stuart Hitchcock, April Bonham (7.00)

### 50th Anniversary Tom Quilty – Attendance by Ron Males and Stuart Hitchcock

Email from Gay Bonham circulated previously. General discussion on the 2015 Quilty. Gay said the inspection at Del Rio was discussed in the report above. We would need the whole of the golf course. If an application was successful a practice ride would need to be run over the agreed course. This could be a NSW State ride. Discussion finished at 7:55 pm.

### Archiving of files for completed IDP matters

**MOVED** John Howe, Greg Moore  
**THAT** Gay write to Kerry Spratt asking that all the IDP documents be sent to Tom Perkins Snr by registered post. The President will then hold the registered parcel, unopened and will present it to the next SMC meeting.

**Carried** Unanimous

Sonya will contact Kerry with regard to picking up the balance of the endurance records held by her in relation to endurance riding in general.

### Website Membership growth project - Sporting and Rec. grant application.

Tom P previously sent paperwork out to the SMC members. Tom P said he had to have a look at what was done in the past but it was not possible to get into the electronic documents. Previous applications concerned building capacity both in membership and infrastructure. Tom put his application in as a third step in attacking membership growth. Whatever the Government put's up we have to match that dollar for dollar.

### Draft IDP 'Pack' for discussion.

The Pack had previously been sent out to members of the SMC by email. This was discussed in detail. 16 step process. Discussing what would happen with legal representation at an IDP meeting. Also discussing termination of proceedings if the IDP thought the complaint was unfounded. Last page in the document previously sent out was a possible list of penalty guidelines. The paperwork from Kerry is needed to fill in this section.

### Draft TOR with possible updates for discussion.

Document was sent out previously by Tom P. Tom P asked that SMC members go through the paper and come back to the next meeting with anything they want to discuss further.

### Website

Paperwork sent out previously. It's easy to get around and update. Tom P said he had been working with Sonya who would be able to maintain the ride calendar. Tom P asked the SMC to let him have feedback so that he can get back to Platypus next week. Nominated Tom P, Gary Tweedie and Sonya to maintain the site.

### State Ride Archives

Gay said she wrote to Helen Lindsay who sent the up to date archives.

**MOVED** Gay Bonham, Greg Moore  
**THAT** NSW ERA send Helen Lindsey a cheque for \$1,000  
**Carried** Unanimous

### AGM Proposal

Gay said she will put a formal proposal to the next meeting but would like some cash up front. Has a price for a lady who presents emergency rescue and first aid presentations. She charges \$500 plus expenses. Looking at around \$800. Would like to do this presentation at 9.30 Sunday morning. Other ideas were: what's involved in a vet check, what's involved in training, what do you want to achieve etc. Saddle fitting workshop. Possibly start on Friday. Roast dinner for \$19 per head at the RSL. Asking for \$1500 funding for now. The other things may not cost a lot. The AGM is to be held at Manilla. Gay to supply all the necessary information for the next newsletter.

**MOVED** Gay Bonham, John Howe  
**THAT** NSW ERA approve a contingency fund of \$1500 to assist with the holding of the AGM and seminar at Manilla in February 2013.  
**Carried** Unanimous

### Resignation by Kerry Spratt

Agreement a letter be sent to Kerry thanking her for her contribution to the sport of endurance and in particular the NSW ERA. Tom P said that with Kerry resigning we are losing a very hard worker and we will need a couple of people to step up and take on some of her work.

### Portfolios of AERA, International and Grants

Belinda Hopley is next in line to fill the casual vacancy for the NSW SMC. Tom Mc said that Kerry has been heavily involved in the new Constitution for the AERA. Tom Mc said that Kerry would possibly be asked to stay on the Constitution sub committee. After some discussion agreement was reached to write to the AERA withdrawing Kerry's commission as a delegate for NSW.

**MOVED** John Howe, Gay Bonham  
**THAT** Tom Perkins Snr be a NSW delegate to the AERA  
**Carried** Unanimous

Tom P suggested that this new delegate would stay



until the end of Kerry's term.

#### Committee Reports

#### **Sonya Ruprecht– Secretariat/Membership services**

Membership for the year to date: Adult 445, Junior 45, Associate 34, Honorary 6, Total 530. Newsletter is 330.

**MOVED**     **John Howe, Greg Moore**  
**THAT**       the new members be accepted and their names published in the newsletter

**Carried**     **Unanimous**

#### **John Howe – Ride calendar**

*The ride calendar is looking good for the rest of the year and into early next year. With the number of rides that have shifted to the back of the year;- Q60, Sassafras and The South Coast Zone ride, there is plenty of time for points scores to be settled and a real competition carried out. Thus more bums in saddles.*

*Several riders have expressed a desire to go to Queensland next year to have a go at the Quilty. However, a number haven't qualified so I feel that we should tout for a kind club to run a Quilty qualifier 160km ride early next year in time to be able to get to the Quilty, much along the lines that Windeyer did in 2010.*

*The visit to Del Rio I felt holds promise for the future of the Quilty in 2015, now we have to wait upon a favourable response from the Del Rio management. Ron and Stewart are very positive re the [track.lt](#) would be wonderful for us to hold the 50th Quilty in the Hawkesbury district. Kind regards, John Howe. NSWERA Ride Calendar Portfolio*

#### **NEW RIDE BOOKINGS RECEIVED.**

Zone One ride application forms were handed to Gay to scan and send to John and Sonya.

Ride around the Rock – WAS approved for the 5<sup>th</sup> May 2013 – but they are hoping to change now to the 12<sup>th</sup> May 2013 – to give more distance between themselves and Gundagai. 80/40/20km.

Coolamon 80/40/20 – preferred date 21 July 2013 – alternative 28<sup>th</sup> July 2013. Does Coolamon know that the State Ride is on 13<sup>th</sup> / 14<sup>th</sup> July. They may want to change their ride date to the 28<sup>th</sup>.

Bago Bush Ride 80/40-60/20 – preferred date 28 July 2013 – alternative 4 August 2013. **Approved for 28<sup>th</sup> July 2013.**

Freemantle 40/20 (Saturday) 20/50/80 (Sunday) 3 & 4 August 2013. **Approved**

Sussex Inlet has finally sent in an amended form for 11<sup>th</sup> November 2012. 100 klm elevator, 40 and 20. This has already been approved.

Ride Around the Rock want to move to 12<sup>th</sup> May 2013. This is the same weekend as the Muster. **Approved.**

Discussing Putty on 1<sup>st</sup> weekend in July but the second weekend would be the traditional date.

#### **Tom Perkins –President, Google Maps, Governance, Procedures.**

*This last month has been taken up with some fairly heavy projects. Preparing and submitting a Grant application to the NSW Dept of Sporting and Rec., finalizing a draft IDP Pack, and setting up a new website. A copy of the grant application and the draft IDP Pack were circulated to the SMC on 5<sup>th</sup> Sept as pre reading for Friday's meeting.*

*The website is almost complete with Ken McKay of Platypus Websites working to complete the interactive forms while I am updating form and content. I anticipate we shall have the project completed for presentation and sign off on Friday and launch it live immediately after that. Management of the website will need to be discussed and finalized on Friday. To view the website under construction go to [www.platypuswebs.com.au/nswera/](http://www.platypuswebs.com.au/nswera/) please review and feed any ideas or comments to me.*

*It is with regret that we have received Kerry Spratt's resignation from the SMC effective from 6<sup>th</sup> Aug. Kerry has decided to step down from the SMC and spend more time participating in the sport while pursue other interests. Kerry dedicated a large slice of her life over the last 14 years to serving the association as a member of the SMC, including 12 years as our AERA delegate where in recent years she has been Vice President. Kerry, a tireless worker of exceptional intellect and skills is most effective in 'the engine room', never seeking the spotlight but driving and guiding any group she participates in to achieve a quality team outcome. Any review of the association's achievements over these past 14 years would reveal the extent to which her influence and efforts have contributed to the shaping of the association as we know it today, and Kerry's expertise has been invaluable in guiding the NSWERA through some very difficult situations over the years.*

*Kerry, on behalf of the association, and your SMC and AERA colleagues, we thank you for your efforts and your contribution over the years and wish you and your mare many happy trails.*

#### **Tom McCormack – Treasurer, AERA Invoices for approval P&L**

**MOVED**     **Tom McCormack,**  
**THAT**       the accounts be accepted for payment and the financial reports accepted  
**Carried**     **Unanimous**

#### **AERA report**

See Annexure C to these minutes for the AERA report emailed out prior to the meeting.

#### **Gay Bonham – Secretary, Ride Administration, Ride Standards**

Correspondence in and out was tabled and discussed.

Ride application forms with the new form is on the

website and is under control.

#### **Haydn Fisher – Horse Welfare, CS & TPR, Vet Liaison**

Haydn said three EWS letters have gone out. This is now all with Haydn. Four horses drug tested at Shahzada.

#### **Gary Tweedie –AERA Zone Liaison**

No report on course preservation.

On membership, the question was asked whether we should try and revamp the training rider membership that went up to the last AGM. Should we put it up again? Agreement that this would be a good idea.

#### **Zone 1 – Greg Moore – Feedback Forum, Ride Surveys, Membership Surveys**

**Zone One Report** = Preparations for the Bahrain Challenge and the Q60/Zone Championships being held on the weekend of the 6<sup>th</sup> and 7<sup>th</sup> of October are well advanced.

Ride booking forms have been prepared for the Zone One Trainers and the Horsley Park Trainer for 2013. Zone 1 is happy to run the Horsley Park Trainer at S.I.E.C. on Saturday the 9<sup>th</sup> of March 2013 under the same arrangement with the SMC as occurred this year (2012) can the committee please confirm their acceptance of this arrangement.

#### **Ride Surveys & Feedback**

Survey form has been received for Bago, Freemantle and Coolamon and the consolidated results have been forwarded to the ride organisers.

There has been no member feedback since the last meeting.

Ride Survey results were sent to the SMC earlier for their review and information.

#### **Zone 4- Steve Roberts – Dispute Resolution & Disciplinary Process amendments**

Successful Coolamon ride. New speed record set for the ride. Running a TPR school with basic introduction to endurance in Canberra. Zone Championships coming up at the Rock.

#### **Zone 5 – Belinda Hopley – Horse Welfare, CS & TPR, Vet Liaison,**

**Bago** 29/7/12, 80k, 40-60k, 20k. A well run and friendly ride, with a good, well marked track.

**Manilla Muster** 5-9/7/12, 240k, 80k, 35k. Was well organized, riders appreciated the changes to the

marathon and the 80k loved the course. A few extra markers would have made it perfect. Riders were well behaved. One horse required invasive treatment for a small cut and is required to rest for 12 weeks.

**Shahzada** 25-31/8/12, 400k and 120k – Usual well run and organized ride that seemed roomier than last year. Was dry compared to other years which made for a concussive ride. Some of the wooden bridges need attention. While riders' conduct was good in base and at vetting, they need to be more mindful of other riders and conditions on track.

There were no invasive treatments, however, Andrew Jonkers fell coming off the 1<sup>st</sup> leg on Monday but managed to ride back to base. He was assessed and airlifted to Westmead Hospital suffering concussion and a fractured elbow, but was discharged the following day. Alwyn Torenbach stumbled and fell on Wednesday and lost 3 teeth and lacerated his face. He rode back to base and then withdrew.

**TPR School** – There will be a TPR school held at Kambah Pony Club, ACT, to be held next weekend. The format will have the TPR training in the morning, a sausage sizzle for lunch then cover training, feeding and shoeing, horse and rider gear, and then going to your first Endurance ride in the afternoon. Candidates sitting the TPR course can claim petrol expenses, courtesy of the NSW Department of Sport and Recreation.

**TPR membership** – Congratulations to Greg Moore on becoming an accredited TPR, and Steve Broadbent became a provisional TPR at Shahzada with Jeff Bonham.

#### **Vet Liaison/Horse Welfare-**

Nothing to report, other than people need to apply for their Property Identification Code (PIC) numbers with their local Livestock Health and Pest Authority- [www.dpi.nsw.gov.au/agriculture/livestock/nlis/pic](http://www.dpi.nsw.gov.au/agriculture/livestock/nlis/pic). It gives the details of why, what you need and how much.

#### **South Coast Zone-**

Quite a few South Coasters were seen at Shahzada this year having a good time.

There being no further business the meeting closed at 10.38 pm

**AERA Report annexed to the September Minutes detailed below:**

#### **AERA – July meeting key points.**

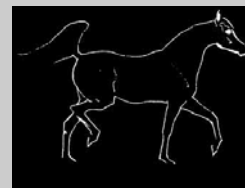
Course markers can now be ordered online at the AERA website at a cost of \$1.10 per item including GST and freight.

It was recommended that the squad is dissolved at the end of the 2012. A replacement mechanism is to be discussed once the future relationship with EA is known.

(Continued on page 46)



# Kintamani Arabians



Congratulations  
Kintamani Charisma  
for achieving  
5078kms!

**Young stock  
available  
Just ask for a  
sales list**

19 years young and following a severe hoof  
injury in April, Riz cruised around a tough  
Sassafrass with Alan!!

Lindsay family - COWRA NSW

[kintamaniarabs@bigpond.com](mailto:kintamaniarabs@bigpond.com)

ph: 63429289 0427429289 & 0419619761



Happy Social rider at Brookvale. Photo: by Andrew Hennell

# 2013 Ride Calendar

## February

1-3	<b>NSWERA – Annual General Meeting – MANILLA</b> 1 <sup>st</sup> workshops/2 <sup>nd</sup> AGM-Presentation-Dinner/3 <sup>rd</sup> Emergency Rescue Session	<b>Info.Gay Bonham 6785 2055</b> <b>Booking Sonya Ruprecht 65538640</b>	
16&17	<b>Zone One Training Rides</b> 40/20/5km Both Days	Greg Moore 0419 692070 <a href="mailto:gregoryamoore@hotmail.com">gregoryamoore@hotmail.com</a>	1
24	<b>South Coast ERA Training Ride at Sassafras</b> – 40/20	Alan Marshall 4422 8818	5

## March

9	<b>Horsley Park Training Ride</b> – 40/20	Charlie Gauci 4567 0567 <a href="mailto:charlie@tracer.net.au">charlie@tracer.net.au</a>	1
16&17	<b>Bumbaldry Training Rides</b> 40/20 both days \$45/\$25	Helen Lindsay 6342 9289 <a href="mailto:kintamianarabs@bigpond.com">kintamianarabs@bigpond.com</a>	4
17	<b>Williams Valley Endurance</b> 80/40/15km-TBA	Rachel Haskins 0413 028220 <a href="mailto:rachelghaskins@yahoo.com.au">rachelghaskins@yahoo.com.au</a>	6
29	<b>Cedar Ridge Easter Carnival-AERA</b> 80/160 elevator (over 2days)FEI**120/*80, AERA 80/40/20 \$175/\$250/\$200/\$95/\$55/\$35	Courtney Freeman 0417 248172 <a href="mailto:premons@cedarridgestables.com.au">premons@cedarridgestables.com.au</a>	

## April

1	<b>Cedar Ridge Easter Carnival-AERA</b> 80/160 elevator (over 2days)FEI**120/*80, AERA 80/40/20	Courtney Freeman 0417 248172 <a href="mailto:premons@cedarridgestables.com.au">premons@cedarridgestables.com.au</a>	
13&14	<b>Q60</b> 100-80/40/20 TBA	Greg Moore 0419 692070 <a href="mailto:gregoryamoore@hotmail.com">gregoryamoore@hotmail.com</a>	1
20&21	<b>Tooraweenah</b> 80/40/7.5 S\$80/J\$55/T\$40/Soc.\$20	Sonia Bonham 6848 5345 <a href="mailto:gavinandsonia@bigpond.com">gavinandsonia@bigpond.com</a>	2
28	<b>Gundagai</b> 80/40 S\$90/J\$90/T\$50	Rick Owen 69 441628	4

## May

10-12	<b>NSW State Championships-Manilla</b> 160/85km	Gay Bonham 6785 2055 <a href="mailto:igbonham@bigpond.net.au">igbonham@bigpond.net.au</a>	2
25&26	<b>Wingello Forest Ride</b> 80/60-40/20/10 S\$100/J\$75/T\$60/S\$40/S\$30	Bec Hogan 0412 600173 <a href="mailto:bechogan@newmoonstud.com.au">bechogan@newmoonstud.com.au</a>	5
25&26	<b>Mudgee 40<sup>th</sup> Anniversary Ride</b> – 20 (Saturday) 80/40km(Sunday) -TBA	Mette Sutton 6372 4960 0400 308626(best) <a href="mailto:mette.sutton@bigpond.com">mette.sutton@bigpond.com</a> <a href="mailto:mette.sutton@midwestern.nsw.gov.au">mette.sutton@midwestern.nsw.gov.au</a>	2

## June

7-9	<b>Tom Quilty Gold Cup – 160km</b> Kilkivan – QLD	Dee Berry 0448385825 <a href="mailto:secretary@kilkivanquilty.com">secretary@kilkivanquilty.com</a>	QERA
30	<b>Kundabung</b> 80/40/20 – TBA Dual Affiliated QLD	Sonya Ruprecht 0409539523 <a href="mailto:bmil@bigpond.com">bmil@bigpond.com</a>	6
30	<b>Lighthouse Ride Harden</b> – 80/40/20	Kate Smith 0412281141 <a href="mailto:caseyamandasmith@hotmail.com">caseyamandasmith@hotmail.com</a>	4



July			
11-15	<b>The Muster – Manilla</b> 240/80/40 - TBA	Gay Bonham 02 67 852055 <a href="mailto:igbonham@bigpond.net.au">igbonham@bigpond.net.au</a>	2
21	<b>Coolamon Endurance Ride – 80/40/20</b> \$80/\$55/\$20	Megan Menzies 0428 278536 <a href="mailto:rmmenzies@bigpond.com">rmmenzies@bigpond.com</a>	4
28	<b>Bago Bush Ride – 80/60-40/20 TBA</b> Dual Affiliated QLD	Robyn Coombes 6585 6761 <a href="mailto:robcoombes@people.net.au">robcoombes@people.net.au</a>	6
August			
3&4	<b>Freemantle Endurance Ride – 3<sup>rd</sup> 20/40 &amp; 4<sup>th</sup> 20/50/80</b> \$90/\$50T/\$30S	Lee Curtis 63374195 <a href="mailto:leeruthcurtis@gmail.com">leeruthcurtis@gmail.com</a>	2
11	<b>Cobark – 80/40/20 TBA</b>	Kerry Spratt 0412 014430 <a href="mailto:kerryspratt@optusnet.com.au">kerryspratt@optusnet.com.au</a>	6
11	<b>Sussex Inlet Charity Ride – TBA</b>	Wendy Jesson 44230552 <a href="mailto:wendyjesson@bigpond.com">wendyjesson@bigpond.com</a>	5
26-30	<b>Shahzada Memorial Test – 400/120</b>	Sue Todd 63797218 <a href="mailto:suetodd@activ8.net.au">suetodd@activ8.net.au</a>	1
September			
14&15	<b>Woodstock 40/20(Saturday) 80/40/20(Sunday)</b> TBA	Helen Lindsay 6342 9289 <a href="mailto:kintamaniarabs@bigpond.com">kintamaniarabs@bigpond.com</a>	4
October			
6	<b>ACTERA National Capital Brookvale</b> 100/40/20 – TBA	Gertraud Norton 0427617114 62271378 <a href="mailto:gertraudnorton@bigpond.com">gertraudnorton@bigpond.com</a>	4
12&13	<b>Putty Endurance Weekend</b> 120/80/40/20 – TBA	Charlie Gauci 4567 0567(after dark) <a href="mailto:charlie@tracer.net.au">charlie@tracer.net.au</a>	1
November			
10	<b>Sassafras 80/40/20 \$90S/\$60J/\$40T/\$20S</b>	Alan Marshall 44228818 <a href="mailto:kirkh@skymesh.com.au">kirkh@skymesh.com.au</a>	5
<b>Zone 1</b> —N/W Sydney & Environs <b>Zone 2</b> —Central West <b>Zone 3</b> —Riverina <b>Zone 4</b> —Snowy <b>Zone 5</b> —South Coast <b>Zone 6</b> —Mid North Coast			

## Personal Accident Insurance

With the premium for the mandatory PA for 2013 being set at \$100, an increase of over 40%, AON was requested to submit alternatives and a new policy with a different underwriter was adopted. The features of the PA insurance for 2013 are:-

PA insurance is now optional. (In deciding whether to take up the PA insurance option in the membership renewal all members should carefully weigh up the risk and their personal circumstances.)

The gap between the end of the 2012 policy and the start of the 2013 policy is covered, provided the 2013 policy is taken up not later than 28<sup>th</sup> February 2013.

2013 PA Policy detail, as provided by AON.

Continued on Page 42.

(For the full policy disclosure statement go to the AERA Web Site. 'Insurance' – 'Policy Summaries' – 'Members PA Product Disclosure Statement 2013'.)

Description	Benefit	Accident & Health
Members Personal Accident		Optional
Scope of Cover		Personal injuries sustained whilst engaged in recreational non-income deriving equestrian activities twenty-four (24) hours a day seven (7) days a week. An exception relates to member being paid to ride in an official endurance ride listed on the AERA calendar.
Age Limit	Adults	18 to 80
	Juniors	Under 18
Deferral Period	Adults	14 days
	Juniors	As per non income earner benefit
Benefit Period		52 weeks
Calculation Method		Rate 1/7 <sup>th</sup>
Schedule of Benefits	Death & Capital	Adult \$50,000 Junior \$10,000
	Weekly	85% up to \$500
	Non Medicare Medical Expenses	\$5,000
	Funeral	\$5,000
	Emergency Home Help	\$200 p/w for 26 weeks
	Student Tutorial	\$200 p/w for 26 weeks
	Out of Pocket	Up to \$1,000
	Corporate Image Protection	Nil
	Replacement Staff/Recruitment	Nil
	Visitor	Nil
	Coma	Nil
	Rehabilitation	Nil
	Chauffer Expenses	Nil
	Orphan	Nil
	Education Fund	Nil
	Partner Retraining	Nil
	Financial Advice	Nil
Compensation Table	Loss of hearing	Both ears 80% One ear 20%
	Permanent Total Disablement	Replaced by Paraplegia or Quadriplegia where the person is over 65 years of age.
	Permanent loss of use of whole hand	80%
	Permanent loss of use of 4 fingers	50%
	Permanent loss of use of fingers	3 joints 10% 2 joints 7.5% 1 joint 5%
	Permanent Partial Disablement	\$50,000
	Temporary Partial Weekly Benefits	40% of income
Cost		Adult \$75 Junior \$17.50



# 2012 Snowy Zone Championships

## @ The Rock

Riders from all over including Austria, Victoria and Northern NSW made the journey to The Rock for the 2012 Snowy Zone Championships.

The lovely mostly flat track was deceptively challenging for the competitors and their horses, being quite hard and stony in some sections varying to some sections that were softer and a little eroded, providing a thinking riders track. A new leg was used for the second leg of the 120km and the first leg of the 80km, providing stunning views for riders as the sun rose over The Rock and Lake Gilman.

Our wonderful vetting crew consisted of Steve Roberts as head vet and Jane Lord assisting. Sally Stevens was the Chief Steward and kept everything running smoothly in the vet ring over the weekend.

A total of 76 entered over the three events on offer, with 28 contesting the 120km Zone Championship, 36 in the 80km no-frills, and 12 in the 40km trainer.

18 riders were successful in the 120km with line honours being taken by Talea Hasko-Stewart riding Oso Edith 1<sup>st</sup> LWT, with Ben Hudson riding Oso Last Eclipse, 1<sup>st</sup> MWT, in a time of 7hrs 26min. First HWT was Martin Gregson riding Burren-dah Gladiator in a time of 8hrs 48min with Harrison Berg riding Castlebar Duke for 1<sup>st</sup> Junior in a time of 8hrs 19min.

22 riders were successful in the 80km event and 11 of the 12 in the trainer were also successful.

Best Conditioned in the 120km were awarded in the HWT to Burren-dah Gladiator ridden by Martin Gregson, in the MWT to Oso Last Eclipse ridden by Ben Hudson, in the LWT to Oso Edith ridden by Talea Hasko Stewart and in the Jnr to Castlebar Duke ridden by Harrison Berg.

The Chris Walker Memorial "*Fittest to Continue*" award in the 120km was presented to Burren-dah Gladiator ridden by Martin Gregson. This new award was judged by a panel consisting of Stuart Lymbery and Tony Marshall with input from the Head Vet Steve Roberts, following the criteria set out by Chris Walker's son, Matt Walker.

'Best Trot Ups' in the 40km trainer were awarded to Holly Munro, Hanna Eronen, Chrish Wright and Stuart Lymbery.

This year a big thank you must be given to Colin Lewis, his family and his wonderful team at The Rock for hosting the event. A big thank you also to all the wonderful helpers in the office, vet ring and on course at the checkpoints, we could not run the ride without any of them.

Looking forward to seeing you all again Next Year!

# Kiwarrak Cup 2012.

Date: 28/10/12

While the club had mostly new committee members learning the ropes on how to run a ride it went well on the day, nice weather and plenty of helpers. It was decided for the 80km ride to complete the same 40km track on both legs to make it easy for the committee, so in 2013 we can make it bigger and better.

There was plenty of water on track and well-marked for any new comers to the wonderful world of endurance. The 20km riders got given an information sheet regarding what is expected on the day, paying fees, vetting, marking of track, check points etc. We got great feedback from the newcomers, saying this helped them as it can be quite daunting starting something new and not knowing what to expect.

To start off we just like to say a big thank you to Sonya Ruprecht, David Oates, Martin Flippance and Terry McMurrich for all your help and advice. Words can't express enough how much help you all did before and after the ride. We would also like to express our appreciation to all riders including those Queenslanders that made the trip, volunteer's, time keepers, tpr's, Chief Steward (Bob) and vets.

And last to Jan Wade and Martin for letting us run

Meanwhile back at basecamp Jenny Wilson (Publisher), Tracey Morley (secretary), Michelle Ladamore and Janette Nelson (Treasurer) were busy at the Admin shed.



Thank you to all our sponsors that donated best condition horse rugs.  
Jenny Samson won the major raffle prize was 2 nights at Seashells resorts.  
Discount Vet Warehouse supplied most of the raffle prizes a big thank you.

**WINNER OF THE CUP 2012**

*Thomas Hermann riding Tall Timbers High-life Headliner.*

*Time: 4 hours and 24 mins.*

*Time: 5 hrs and 1 min.*



*The first heavy weight winner was Allan Watts in the time at 5hrs and 1 minute on Shakla's Sudden Impact.*

*A close running for Light weight winner Renee Schneider in the time of 5hrs and 10 minutes on Badia Just Rosie and first place Junior was Andrew Mackinder in the time of 5hrs and 10 mins. And to all the best condition winners congratulations.*

*With only 2 vets out it was a great success rate of completions. Great job everyone.*

*If I have forgotten anyone thank you for all your help and support for 2012. Safe and happy riding.*

*Tracey Morley*

*Secretary*





# AERA—July meeting key points continued

## CS Accreditation

Clause 12: to maintain accreditation a CS must officiate at one event at least every 24 months. A Chief Steward subject to the 24 month rule shall regain accreditation by officiating at one event under an accredited Chief Steward and subject to approval by the AERA Chief Steward portfolio holder.

Clause 13: a Chief Steward may have their accreditation revoked at the recommendation of their State Management Committee.

## TPR Accreditation

Clause xx: remove requirement to TPR once a year.

Clause 13: a TPR steward may have their accreditation revoked at the recommendation of their State Management Committee.

Clause 14: that a TPR steward must be a minimum of 18 years of age.

**Vets accredited**—Terri Echel, Karim Kooros, Sarah Pollard-Williams and Daniel Sims.

**Chief Stewards accredited**—Haydon Fisher

## RULE CHANGE MOTIONS

**Motion that all horses participating in endurance rides in Australia are required to complete a horse health declaration form until further notice and provide it to the ride organiser at the point of entry.**

Voting: WA yes, SA no, Vic yes, Tas yes, Qld yes, NSW no. The motion passed the first vote and needs to come back to the next meeting.

## Motion from NVP

Propose a new rule: A11.8

**THAT the Ride Organiser will liaise and negotiate with the head Veterinarian at least 4 weeks before the ride to ensure there is adequate treatment for horses available at the ride. This will include provision of equipment, facilities, consumables and competent personnel to cover expected treatments**

It will become A11.3. Rule A13.6 changed to A11.4 existing 11.3 onwards to be renumbered from 11.5

**Voting:** WA yes, SA yes, Vic yes, Tas no, Qld yes, NSW yes. Carried. This will be a **NEW RULE 2013**.

## QERA Motion 1.

**That M4 Disciplinary Code is added**

**Voting:** WA yes, SA no, Vic no, Tas no, Qld yes, NSW no. **MOTION LOST.**

## NSWERA Motion (From the NSW AGM):

**“That distance travelled by horses in training rides and mini marathons is added to the horse’s lifetime distance register provided these horses have a logbook number”.**

**Voting** WA no, SA no, Vic no, Tas no, Qld no, NSW yes. **Motion Lost.**

## QERA Motion 2. Motions for AERA in relations to the new Accreditation processes:

### Motion re CS accreditation:

That the March 2012 CS accreditation Procedure be adopted and rule A9.7 be amended to read:

**A 9.7 A Chief Steward shall be accredited in accordance with the current AERA Procedures.**

**Voting:** WA yes, SA yes, Vic yes, Tas yes, Qld yes, NSW yes. **CARRIED.**

**Passed first vote. Needs to come back to the next meeting.**

### Motion re TPR accreditation:

**That the March 2012 TPR accreditation Procedures be adopted, and rule A10.7 be deleted and A10.6 is amended to read:**

**A10.6 TPR Stewards shall be** accredited in accordance with current AERA Inc. Procedures.

**Voting:** WA yes, SA yes, Vic yes, Tas yes, Qld yes, NSW yes. **CARRIED.**

**Passed first vote. Needs to come back to the next meeting.**

## QERA Motion 3

### A8 RIDE OFFICIALS

**8.4 as is.....**

**8.5 Ride officials must recognise and respect not only their own rights and responsibilities but also must conduct themselves with due regard to the rights and responsibilities of members, other officials, riders and members of the public.**

**8.6 Ride officials are to conduct themselves in a manner which maintains the reputation and orderly functioning of endurance riding as determined by the AERA Inc Members Handbook.**

**8.7 Through the Chief Steward, any designated ride official has the right to refer any matter relating to the irregular running of an endurance ride to their State Management Committee.**

**8.8 Any member, other official, rider or member of the public has the right to refer any irregular, abusive or unsuitable behaviour of a ride official to their State Management Committee.**

This is a tidy up of the current rule A8. It allows anyone at a ride to make a complaint. Currently the rule does not refer to all of those things. The CS may not address the matter properly at the time. A member has the right to take the matter to the SMC.

**Voting:** WA yes, SA no, Vic yes, Tas no, Qld yes, NSW yes. **CARRIED.**

**Passed first vote. Needs to come back to the next meeting.**

**Changes to Harness rules regarding logbooks and membership cards.**

**That Rule 38.1 be altered to read:**

**“Separate logbooks are not required for harness events. The appropriate page on the existing logbook is to be marked so as to show the horse is competing in a harness event. The horse is assumed to be at novice harness status unless the connections can prove otherwise.”**

**Rule 38.2 be altered to read. “Drivers need not be issued with separate membership cards’, however state registrars must keep a record of novice and endurance drivers and issue membership cards reflecting their status.”**

**Rationale:**

Currently rule 38.1 means that one horse can have two logbooks. This causes great confusion in the database. With the low number of horses competing in harness events it is not necessary for separate logbooks and in any case records of all events entered should be kept in the one place.

An endurance horse under saddle, does not automatically qualify as a yellow book harness horse.

**Voting:** WA yes, SA yes, Vic yes, Tas yes, Qld yes, NSW yes. **Carried.**

**Passed first vote. TO COME FOR THE NEXT MEETING.**

**NECROPSY**

Should the chain of process be: horse death at a ride, CS and head vet decide if 1) the horse death is metabolic related or 2) a fracture. If it's a metabolic related death, can the vet identify with reasonable certainty what the cause of death may be? If yes, necropsy is not done. If the answer is no, it's not obvious, we ask for a necropsy following a risk assessment. Paddock necropsy or send to a clinic or hospital?

The new rules for this year cover a lot of what's been suggested.

Process of immediate notification will go a long way to make sure that the rules are followed.

**That V16.8 is changed to read: The veterinarian shall pass all fees for the necropsy to the AERA. The AERA will be entitled to a copy of the necropsy report and may recover these costs from the owner/ responsible member.**

**Voting:** WA yes, SA yes, Vic yes, Tas yes, Qld yes, NSW yes. **Carried.**

**Passed first vote. TO COME FOR THE NEXT MEETING.**

**100% Completion Awards.**

As **per** the discussion from Anne Barlow previously.

From the AERA perspective, would like to lift the bar a bit before we do this on a national level.

We need a budget. Would like to see the first hurdle raised to about 500km. Perhaps a different structure. 5 x 80km events without a vet out is a pretty good achievement. This is for 100% completions in the calendar year. The whole thing could be dealt with on a state level. When will AERA hand them out? At a Quilty? On a national level, all events would be included when competing interstate.

Recommendation: that this concept be returned to the states to be implemented on a state level. To be discussed by the State SMCs.

**Tom Quilty**

A line vet must have done 4 endurance rides in the preceding 18 months of the Quilty, of which one must be VGIH.

**AeraSpace**—Training weekend in October in Brisbane.

**Elevator Training Rides – Refer email correspondence.**

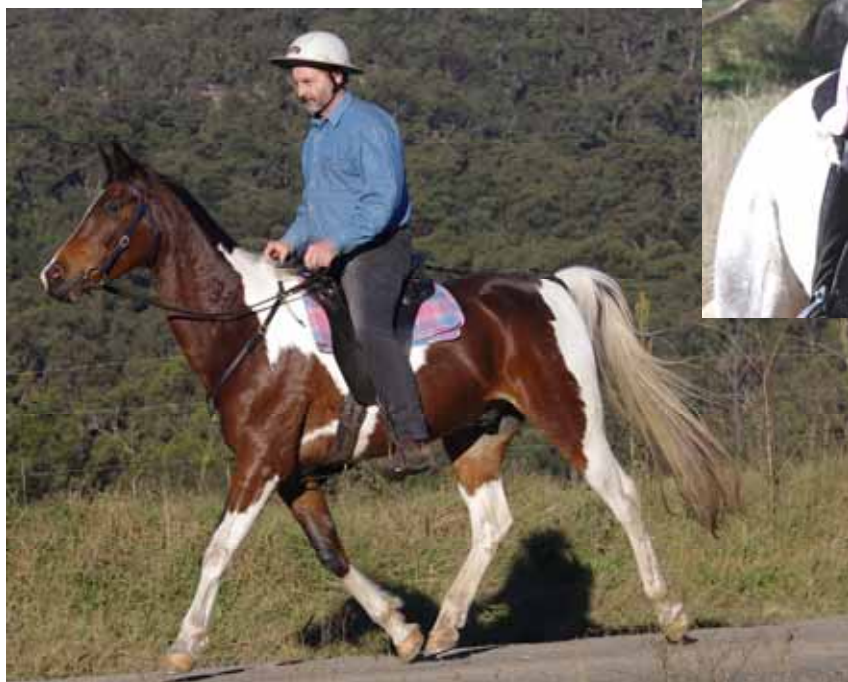
Elevator trainers and elevator intro rides. Currently the minimum age for a 40km is 4 ½ years for the horse. What if it's a 65km training ride for 4 ½ year old horses. Intro ride is 3 years. What if it's an elevated intro ride at 35km. If we're not happy it needs to be in the rules.

**Each SMC to discuss this prior to the next meeting. Possible rule change.**

## Selection of Riders in NSW Top 10



Carol Major and Saradon  
Robin Young and Razorback Kadance  
Tiarna Young and Burren-dah Narla  
Gary Thomas and Ben Mariah  
PHOTOS: Animal Focus







Shantel Nagle & Windradyne Ballerina (1st Junior) NSW Pointscore  
Allison Knihinicki (1st MWT) NSW Pointscore.  
Haydn Fisher and Arasata Narhalinian (2nd HWT) NSW Pointscore  
Photos: Animal Focus



## Notes on SMC Meeting of 2 November 2012

Present: Tom Perkins Snr (Chairman), Carol Griffiths, Gay Bonham, Haydn Fisher, Marlee Turnbull, Tom McCormack, Brad Dillon, Greg Moore (Zone 1), Melissa Attwell (Zone 2), Belinda Hopley, Carol Griffith,

Apologies: Gary Tweedie, Melissa Attwell, John Howe, Steve Roberts (Snowy Zone), Kieron Power,

In attendance: Helen Rich (minutes), Charlie Gauci (part meeting), Sonya Ruprecht, Kerry Spratt, Stuart Hitchcock, April Bonham, Neil Clarkson (first part of meeting – Quilty discussion section)

### 50<sup>th</sup> Anniversary Tom Quilty Ride

*I have circulated an email from Stuart Hitchcock and Ron Males indicating their confidence that a course could be designed and Stuart and Ron will attend our meeting on Friday 14<sup>th</sup> September to discuss this further.*

*As part of a feasibility study, on Saturday 25<sup>th</sup> August, Tom Perkins, Tom McCormack, John Howe, Belinda Hopley, Gay Bonham, Kerry Spratt and Neil Clarkson met with the Manager of the Del Rio Riverside Resort to discuss the possibility of using Del Rio as a ride base for the 50<sup>th</sup> Anniversary Quilty.*

*We discussed the accommodation and facilities with the Manager and then inspected the grounds. The section of the resort that was to be made available was approximately one-quarter of the area that was considered would be necessary for 350 camp sites, a vetting and communal strapping area. Further discussions took place and Stuart advised he was meeting with his boss, the owner of the resort, on the following Monday and would make representations on our behalf that we would also need the whole of the golf course to provide sufficient room for such an event.*

*Apart from some portaloos and a large marquee which would seat approximately 400 people, those in attendance agreed the facilities would be suitable for a Quilty with the numbers expected.*

*On Monday 27<sup>th</sup> August, Stuart came to St Albans after the meeting with the owner and advised me that the owner was very happy to make the whole of the resort available to us for a "practice" run and also for the main event. He advised he would get back to us with a quote in the next few days.*

*On Thursday 30<sup>th</sup> August, Stuart again came to St Albans and handed me a quote for the use of the grounds for camping and also the prices for the accommodation.*

Letter from Victoria SMC tabled and read. VERA is open to the idea of the 2015 Quilty being held in NSW but pointing out that it is up to NSW to convince VERA as to the viability of the swap.

Tom McCormack recapped the present position and what has happened at previous NSW SMC

meetings with reference to changing or swapping dates with VERA.

Tom Perkins said we need to decide if it is viable to propose bringing the Quilty 'home' to the Hawkesbury area for the running of 50<sup>th</sup> ride in 2015 Quilty. Is the course viable? 2) Is there a viable ride base available? All were in agreement that the total package was viable and a distinct probability of going ahead. Tom P pointed out that this committee is making the commitment but it probably won't be this SMC who will be delivering the ride. We need a solid foundation and process in place now. Get the basics right now. The ride would be run by a subcommittee.

**MOVED** **Gay Bonham, Marlee Turnbull**  
**THAT** the NSW SMC pursues the idea of conducting the 50<sup>th</sup> Anniversary - 2015 Tom Quilty ride at Del Rio.

**Carried** **Unanimous**

We need to send an official letter to VERA advising of change of dates. Charlie said that we now have a course but are still working on the venue set up.

Proposal for the course was tabled and read by Gay Bonham. The proposed course includes parts of the old Quilty course. Charlie suggests we include a map and some detail of the ride base.

Need to get a small group together to work out the vision statement or parameters of the project and tie together with Tom McCormack's handbook and produce a set of terms of reference, rules etc as to how the subcommittee and the SMC will interact with each other. Choose a 'working party' at this meeting to return to the next SMC with their proposal.

Charlie Gauci would head the designated sub committee to get this underway. Tom P said we need to keep the SMC and the sub committee separate. Don't want there to be too much cross membership. The SMC has other business it needs to get on with and not be involved with the detail of the Quilty committee.

Stuart said Ron Males was concerned with the structure of the Quilty committee. Need workers – people who will do what they say they will.

**MOVED** **Marlee Turnbull, Tom McCormack**  
**THAT** a working party for the 2015 Tom Quilty ride consist of Stuart Hitchcock, Gay Bonham, Greg Moore, Charlie Gauci and Neil Clarkson

**Carried** **Unanimous**

**MOVED** **Tom McCormack, Marlee Turnbull**  
**THAT** Charlie Gauci be the chairman of the working party

**Carried** **Unanimous**

### Membership Growth

Tom P said we need to go into 2013 with a plan to regain membership numbers.

*'Growth' is becoming far more critical. We need to*



*go into 2013 with a priority plan and strategy to reverse the declining membership. By the end of this year we need to pull all together a plan and strategy for 2013, take it to the AGM to get whatever endorsement and any necessary constitutional adjustments and drive the project through next year.*

Carol's proposal will go to the AGM for consideration.

On another matter, Tom Mc advised that the issue of log books without horse ID is illegal. There must be an owner ID page filled in. Sonya said that she does not issue blue books without an owner ID.

Back to Carol's presentation on membership changes. Looking at creating Intermediate Membership for say \$50 to \$60 bearing in mind that only full membership will give you PA insurance. As a bonus for Intermediate Membership, 'If I am riding with a Blue Log Book then I get to be part of the point score system'.

There needs to be an option to upgrade to full membership. We need to settle on what this membership will be called. Need a rationale on this second tier membership. Points associated with the rider in the first year – at least this would be a start.

Hopefully we would get a percentage of people moving on into the 80 klm rides.

Day members cannot take part in the intermediate point score.

Tom Mc is to check with the insurance company as to the status of this type of member.

#### **Archiving of files for completed IDP matters**

Agreement to not buy any more filing cabinets at this stage.

#### **IDP 'Pack'**

Tom P said this was discussed at the last meeting. He has made a couple of adjustments following that meeting. Thinks it is ready to be signed off on. Considerable general discussion then took place.

**MOVED**     **Gay Bonham, Tom McCormack**  
**THAT**       we accept the IDP Pack as presented to the meeting as amended

**Carried**     **Unanimous**

#### **Website**

Up and running. Going well. Has anyone heard from Brad? We need someone to take this one. Tom P said he had heard that Brad had resigned from the committee. Agreement this to stay with Tom P for now.

#### **Vets and Chief Stewards for Tom Quilty**

AERA are asking for a list of vets. Maximum of three. Also chief stewards. Gay Bonham declared a conflict of interest and then nominated Tom McCormack, Neil Clarkson and Jeff Bonham for the chief steward positions. Kym Hagon, Rochelle Joyce, Robyn Mather as vets. Gay to advise these people that the SMC have put their names forward

for the Tom Quilty list.

#### **Sponsorship for Kilkiven Quilty 2013**

Discussing the sponsorship packages available.

**MOVED**     **Greg Moore, Gay Bonham**  
**THAT**       NSW ERA investigates sponsoring a buckle package for the Kilkiven Tom Quilty 2013 in the heavyweight division if available. If not the junior division.

**Carried**     **Unanimous**

#### **Letter from Julie Haig regarding NSW member**

Discussing the letter from Julie Haig complaining about an x NSW member. He is supposed to be a Northern Rivers member which means he should be a member of QERA. NSW cannot discipline a member from another state.

Discussing the Northern Rivers Zone and the area declared by QERA. Tom P. said that there have been 4 or 5 definitions of the boundary over the years; each one being bigger than the last, unilaterally declared by QERA but not ratified by NSWERA. From the beginning it has been NSWERA's position that anyone living in the NRZ should be allowed to be a member of whichever State they wish. When we receive a membership application, if the address is in NSW Tom P believes that Sonya should accept their membership. These people would need to be told that they can join NSW but they would probably not be part of any QERA point score.

#### **Membership Fees for 2013**

Tom P said that he had a note from John Howe asking that membership fees be deferred until he can be at the December meeting.

#### **Sonya Ruprecht– Secretariat**

Year to date: Adult 451. Junior 46, Associate 35, Honorary 6. Total 538. Newsletter 330.  
2011: Adult 488, Junior 38, Associate 40, Honorary 3. Total 569. Newsletter 342.  
2010: Adult 495, Junior 45, Associate 32, Honorary 3. Total 569. Newsletter 381..  
Have received 'new' ride booking forms for ALL rides – except – Cedar Ridge Easter Carnival. Sonya confirmed that Cedar Ridge have been asked for the new signed forms on more than one occasion.

Happy to report that the training weekend for the new database was very successful. It was a very positive meeting with all States represented. The program writers invited input and suggestions from those who will be using the system when it is up and running and gave the impression that they can accommodate minor changes that were required. It seems that it will be a great improvement with information being available to members immediately that registrars and ride organisers upload data. New Ride Bookings lodged:

**Bumbaldry** (Snowy Zone) 40/20 – preferred date 9 & 10 March 2013 – alternate 16 & 17 March 2013.

This ride is on the same weekend as Horsley Park.



**Approved.**

**Q60** 100-80/40/20 – preferred date 5 May 2013.  
Already approved.

**Coolamon** 80/40/20 – preferred date 21 July 2013.  
Already approved.

**Shahzada** 400/120 – 26-30 August 2013.  
**Approved**

**Woodstock** 80/40/20 over 2 days 14 & 15  
September 2013 – alternate date 21 & 22  
September 2013. **Approved** for 14/15<sup>th</sup>  
September.

Zone One trainer and the Horsley Park rides were  
approved prior to this meeting so that they could go  
into the newsletter.

**Williams River** twilight now wishes to be a Sunday  
day ride on the 17th March from the 16th March,  
twilight.

**Putty** 13<sup>th</sup> and 14<sup>th</sup> October 2013. Harden usually  
goes on the October long weekend. Sonya to  
check with Gordon with reference to Harden.

**Approved.**

Gay sent an email asking to swap the Muster for  
the State Ride. State Ride listed for 13/14<sup>th</sup> July  
2013. Q60 said they would get back to Gay. Gary  
said the Q60 did not want the dates swapped. The  
State Ride would hurt more than the Muster. Gay  
wants the Muster moved to July.

Q60 could move to April. Probably more rides  
affected by moving the State Ride. 9 – 13 would  
be the State. Muster to 13 – 14 July. John to ring  
Coolamon and Ride Around the Rock and advise of  
the possible dates for the running of the State Ride  
and the Muster. Sonya to brief John on who he  
needs to ring.

**MOVED** Marlee Turnbull, Belinda Hopley

**THAT** the new members are accepted and  
their names published in the newsletter

**Carried** Unanimous

Sonya did the draw which resulted in the following  
names being chosen: Chris Schofield - \$100  
voucher. Kerrod Leary, Marty Myhill, Vinnie Leary,  
Kevin Waldron and Robert Pike - \$50 voucher.  
Publish these in the newsletter.

Discussing the photos on the website. Agreement  
to ask members to submit photos for the website.

#### **John Howe – Ride calendar**

*The method that Sonia and I are using to get the  
calendar right for Helen is working pretty well,  
except for the odd ride organizer who changes  
things after we have put the calendar to bed.  
Sonia and I need wigs to replace our hair.*

*The following will need to be considered  
for approval tonight:-*

*Williams River twilight now wishes to be a Sunday  
day ride on the 17th March from the 16th March,  
twilight.*

*Bumbaldry near Cowra wishes to run 2 days of  
trainers 16th and 17th of March. 40km trainer and  
20km intro over the 2 days.*

*Putty Endurance Weekend. 13th and 14th of  
October. Sat 40km trainer and 20km intro rides.  
Sunday 120km AERA and FEI 2 star rides, 40km  
trainer and 20km intro.*

#### **Tom Perkins –President, Google Maps, Governance, Procedures.**

**Website** - Since last SMC meeting my time has  
been mainly taken up with fleshing out the detail of  
the website. Being actively involved in Ken  
McKay's set up of the new website and the transfer  
and updating of the content from the old site has  
allowing me to learn the processes, document the  
procedures, and produce the 'how to' instructions  
that will allow the SMC to manage the website 'in  
house'.

**IDP Pack.** – Following the discussions at the Sept  
SMC the detail of the pack and TOR have been  
adjusted for representing at the 2<sup>nd</sup> Nov. SMC.

**Membership Growth** - With a further drop in  
membership this year the need to  
address 'Membership Growth' is becoming far more  
critical. We need to go into 2013 with a priority plan  
and strategy to reverse the declining membership.  
By the end of this year we need to pull all together  
a plan and strategy for 2013, take it to the AGM to  
get whatever endorsement and any  
necessary constitutional adjustments and drive the  
project through next year.

#### **Marlee Turnbull – Vice President, AERA , Zone Liaison, Child Protection Officer**

Marlee said she has been working on merchandise  
ideas. Chosen a polo shirt for ladies in a cool dry  
fabric. Two choices of blue colours. Vest, soft  
shell jacket. Children's shirt, gravity jacket. Looked  
into the company and once we pay the initial set up  
fees we can just order as we need merchandise  
with a two week turn around. We could get  
samples made up and take orders at the AGM.

Tom McCormack suggested that we identify two  
models. Consider April and Stuart – order a full set  
of everything that fits these two. Set up fee for the  
merchandise is \$70

**MOVED  
THAT**

#### **Tom McCormack**

Marlee purchase one of each item  
piece of clothing for a male, a female  
and a junior for the purpose of  
producing a catalogue and SMC  
members may partake in the initial  
order at cost.

**Carried** **Unanimous**

Marlee said Zone One has a stall at the Small  
Farms Expo next weekend. Greg said Zone One  
had made an executive decision to run with this.

**MOVED THAT** Gay Bonham, Marlee Turnbull  
NSW ERA reimburse Zone One for the cost of the stand at the Hawkesbury Small Farms Expo

**Carried** Unanimous

**Tom McCormack – Treasurer, AERA Invoices for approval P&L**

Aon have sent out warning notices to the AERA. Supplying three notices for every club. Put at the entrances and one near the office.

ID for Dummies coming out and will be on the AERA website shortly. Explaining the terminologies and the way to take markings etc.

See elsewhere in this newsletter for a Profit and Loss Statement.

**MOVED THAT** Tom McCormack, Greg Moore the invoices as presented be paid and the Profit & Loss be accepted.

**Carried** Unanimous

Discussing elevated training rides. The question is should we be allowing 4 ½ year old horses to do 65 klm. Discussing intro rides going to 35 klm.

**Gay Bonham – Secretary, Ride Administration, Ride Standards**

Correspondence in and out was tabled. Gay would like permission to invite the Pony Club riders to the AGM to take part in the emergency training. Duly given.

**Haydn Fisher – Horse Welfare, CS & TPR, Vet Liaison**

No positives on the drug testing. Haydn asked for a scanner to go to each ride with the computer.

Discussing a horse in distress at the Q60. Given a completion but treated inside the two hour mark. Agreement it is up to the head vet to make decisions in this type of case.

**Zone 5 – Belinda Hopley – Horse Welfare, CS & TPR, Vet Liaison,**

**Coolamon** 22/7/12 - 80k, 40k, 20k. A well run and friendly ride, held at the showground with a good, well marked track.

**Woodstock** 15-16/9/12 - 40 & 20k Sat, 80, 40 & 20k Sun. Usual well run ride at the showground with all the amenities. It was LERC's 20<sup>th</sup> Anniversary ride. Two horses suffered mild tie-ups with one requiring invasive treatment.

**Harden** 29-30/9/12 - 80, 40 & 20k Sat and Sun with 160k over 2 days – Usual well run and organized ride held at the showground, with a new cattle pavilion that facilitated vetting with a firm trot out area and permanent lighting. There were 145 nominations all up. All rides started around midday which ran smoothly. One rider fell and was momentarily unconscious. An off duty ambulance officer assessed the rider after an hour or so.

**Snowy Zone Champs** 14/10/12 – 120k, 80k & 40k. An excellent ride with undercover vetting if needed.

A new leg was found that was appreciated by riders, although some rough ground on the course caused some hind end lameness.

**Q60** – Neil Clarkson was the chief steward and reported that a horse is on a 24 week rest order

**Canberra ride base.** Most of the ride goes through NSW. They had to do a risk management plan. They had to get everybody to attend the pre ride. They had to be signed for attending the pre ride talk.

**TPR School/ Intro to Endurance Riding** – The TPR school held at Kambah Pony Club went well. We had 18 TPR participants, as well as 5 Intro's.

There has been interest in another Vet Accreditation course being run early in the New Year.

*Congratulations to Tony Warren, he is now a Chief Steward! I am in the process of purchasing thermometers and stethoscopes. Belinda*



Julie Brooks & Aloha Byshara (1st LWT)  
NSW Pointscore results. Photo: Animal Focus

# Endurance Ride Results

Ride Name: Kiwarrak Cup

Ride Distance: 80km

Date: 28/10/2012

## Heavyweight Division

1	Allan Watts	Shakla's Sudden Impact	5:01:00	37,38,53
2	Gary Thomas	Ben Mariah	5:58:00	35,50,60
3	Steve Broadbent	Foxridge Kalypso King	6:03:00	37,39,47
4	Peter Cooper	Solvang Farm Mataeus	6:50:00	34,51,57
5	Gary Pevy	Churinga Lite Mi Fire	7:05:00	48,47,52
6	Phil Coleman	Rainbows Reach Snowfyre	7:17:00	41,49,52
7	Allan Caslick	Beaujangles Te	7:59:00	41,48,49

## Middleweight Division

1	Thomas Hermann	TTH Headliner	4:24:00	33,40,47
2	Debbie Pevy	Burren-Dah Walter	4:32:00	36,48,52
3	Darryl King	Shanadarr Khaleel	5:02:00	40,47,56
4	Carol Major	Major Luke	5:39:00	32,41,49
5	Sharon Foster	Sharabel Maleka	6:04:00	40,47,49
6	Sally Griffin	Magic Glenn Lumiah	6:08:00	34,41,50
7	Elizabeth Moir	Kenya s Gold	6:22:00	32,34,41
8	Tracy Broadbent	Swamp Rock	6:54:00	42,36,58
9	April Bonham	Lyndrian Genesis	7:13:00	35,44,49
10	Frances Mudford	Yahweh-Salih Sir Ibn Gelibene	7:18:00	38,44,59
10	Sonya Ruprecht	Yahweh-Salih Rasami	7:18:00	33,42,47
12	Renee Kirk	Henley Farm Rafi	7:33:00	31,36,41
13	Margaret Boland	Rosebrae Cameo	7:42:00	40,39,49
14	Debra McQueen	Tora Karlaya	7:43:00	38,38,43
14	Hannah McQueen	Willowmead Sassy	7:43:00	42,42,48
16	Terri McLeod	Al wathba tazmir	7:57:00	35,43,44
17	Allison Knihinicki	KY	8:03:00	33,43,52
18	Ruth Van der Wegen	Aloha Ameer	8:38:00	36,37,44
18	Dianne Brown	Attalah Resyk	8:38:00	38,41,46
20	Jenni Sansom	Alchin Meadows Chantilly Lace	8:46:00	34,40,41
21	Katrina Bodewes	Banfield Paris	8:49:00	37,47,49
---	Bridget Nottle	Basic Instinct	Lame L2	39,43,53

## Lightweight Division

1	Renee Schneider	Badia Just Rosie	5:10:00	38,40,48
2	Emma McCormack	Jezabelle Sweet Dreams	5:36:00	39,47,45
3	Robin Young	Razorback Kadance	5:39:00	37,46,53
4	Anne Hills	Kerewong Shelfyre	5:46:00	34,41,48
5	Karen Anderson	Malleegrove Samsara	7:00:00	41,49,50
6	Antonia Somerville	Allyndah Dezynah Vogue	7:03:00	37,48,54
7	Ros Ryan	Cloudburst	7:17:00	38,50,53
8	Allix Jones	Garnee Torque	7:33:00	37,43,47
9	Lyn Dillon	Banfield Khamsin	8:49:00	40,44,47

## Junior Division

1	Andrew Mackinder	Sundown Park Cariad	5:10:00	38,38,40
2	Tayla Warren	Warren Park Kiara	5:38:00	37,42,44
3	Isabel Foster	Sharabel Akaysha	6:04:00	32,38,44
4	Tomeika Bond-Pevy	Makhtar	7:05:00	47,50,51
5	Mia Bodewes	Booramby Jacob	7:13:00	36,42,57
---	Shannen Thorsby	Whyneenah abu	Lame L2	35,44,54

Ride Name: Sussex Inlet

Ride Distance: 100km Elevated

Date: 11/11/2012



**Heavyweight Division**

1	Peter Norman	Tallaganda Downs Natifa	5:15:00	38,52,46,46
2	Evan Drain-Shepherd	Currowan Clancy	5:25:00	37,54,59,56
3	Paddy Smith	Akifa Farras Titan	6:11:00	36,42,48,57
4	Robert Catlin	Copperkahn Tiara	7:49:00	30,36,42,39
---	Scott Peters	Sharahd Narang	---	32,44,50 (Ret/DNE)
---	Martin Gregson	Burren-dah Gladiator	---	37,45,50 (Ret/DNE)

**Middleweight Division**

1	Jenny Shepherd	Currowan Mojo	5:15:00	32,39,36,36
2	Mitchell Ravallion	Danjera Jed	5:25:00	35,40,43,44
3	John Symons	Forest Dale Belle De Jour	5:41:00	30,36,40,48
4	Bev Turner	Shazzam	5:59:00	37,45,48,49
5	Wendy Dower	Castlebar Jumeirah	6:36:00	29,36,37,40
6	Carol Major	Saradon	7:33:00	44,44,52,44
7	Bruce Carter	Dasharm Zayesha	8:09:00	40,40,46,45
8	Allison Knihinicki	KY	8:13:00	32,48,48,48
9	Alan West	Ehsun Sahara	9:00:00	40,48,48,48
---	Tracy Haack	Cusworth Artist	---	32,44,44 (Ret/DNE)
---	Lisa Swan	Star Jasmine	---	40,44,52 (Ret/DNE)
---	Jennifer Rogers	Burren-Dah Smokin Joe	---	42,42,44 (Ret/DNE)
---	Noni Seagrim	Macquarie Park Shafeeq	---	40,55,48 (Ret/DNE)
---	Corey Nix	Castlebar Sheko	---	48,45,50 (Ret/DNE)
---	Katsumi Ishiguro	Keldon Park Sophena	---	38,43,54 (Ret/DNE)
---	Sam Cunningham	Chilli Chilli Bang Bang	---	36,48,42 (Ret/DNE)
---	Kristie Wright	Khamsin	---	42,52,54 (Ret/DNE)
---	Felicity Baird	La Danza D'Askari	---	44,53,56 (Ret/DNE)
---	Fiona Coddington	Burren Dah Princess Fiona	---	38,38 (Wdn)
---	Daphne Phillips	Achilles	---	32,40 (Wdn)

**Lightweight Division**

1	Shelly Ison	Aloha Fabian	6:00:00	40,48,43,47
1	Roz Edmunds	Everon Park Apollo	6:00:00	32,40,49,56
3	Irene Adams	Shane D Survivor	6:06:00	40,37,55,59
4	Sue Todd	Shakista	6:29:00	43,47,48,52
4	Melanie Whiteley	Blake's Heaven Summer Reign	6:29:00	40,38,52,42
4	Fia Hasko-Stewart	Wantley Kaliph	6:29:00	36,48,48,46
7	Robin Young	Razorback Kadance	7:33:00	32,42,54,42
8	Jacque Thoms	Blake's Heaven Harissa	8:09:00	35,42,50,44
---	Allix Jones	Castlebar Tailwind	---	32,38,36 (Ret/DNE)
---	Talea Hasko-Stewart	Blake's Heaven Ventura	---	34,49,56 (Ret/DNE)
---	Sally Fenner	Cherox Aladdin	---	42,44,44 (Ret/DNE)
---	Emma McCormack	Twynham El Nasiriyah	---	40,45,47 (Ret/DNE)
---	Julia Wolte	Henley Farm Kudra	---	34,45,56 (Ret/DNE)
---	Sharyn Coulston	Castlebar Truffle	---	36,48,48 (Ret/DNE)
---	Bridie Lewis	Wakado Sharkhan	---	37,48,59 (Ret/DNE)
---	Lydia Thomson	Castlebar Icon	---	42,38,41 (Ret/DNE)
---	Carly Nix	Macrocarpa Pizzazz	---	48,43,52 (Ret/DNE)
---	Courtney Chapman	Kyang Mister Personality	Lame L2	32,42,48
---	RebeccaBrieann Morris	Silver Romance	Lame L1	37,41

**Junior Division**

1	Georgia Curry	Macquarie Park Banjo	6:00:00	40,48,51,56
2	Sorsha Stuart-Rokvic	Blakes Heaven Angelico	6:29:00	34,47,52,48
3	Harrison Berg	Castlebar Condor	6:36:00	36,48,57,46
4	Shantel Nagle	Windradyne Ballerina	6:51:00	28,37,35,42
5	Cybele Coddington	Burren-dah Narla	7:49:00	36,44,46,44
---	Tayla Warren	Lilonda Sharjah	---	40,48,54 (Ret/DNE)
---	Britanny Johnson	Akifa Farras Mangu	---	40,40,50 (Ret/DNE)
---	Chelsea Moore	Razorback Sugar N Spice	---	44,40,46 (Ret/DNE)

**Ride Name: Sassafras****Ride Distance: 80km****Date: 25/11/2012****Heavyweight Division**

1	Peter Norman	Tallaganda Downs Natifa	5:06:00	27,44,51
2	Marty Moran	Jelignite Jack	5:24:00	34,42,49
3	Robert Catlin	Copperkahn Tiara	7:15:00	36,43,50
4	Mark Lindsay	Kintamani Jaffah	8:13:00	42,42,53
5	Mark Johnson	Sharahd Chemoss	8:37:00	34,42,48
---	Gary Pevy	Ausden Strut 'N' Stile	Lame L2	39,44,48
---	Martin Gregson	Burren Dah Gladiator	Heart Rate L2	33,37,67
<b>Middleweight Division</b>				
1	Jenny Shepheard	Currowan Starlite	6:06:00	37,36,47
2	Bruce Carter	Dasharm Zayesha	6:35:00	33,45,49
3	Rachel Reid	Blake's Heaven Summer Reign	6:44:00	34,43,55
4	Clare Feary	Die Kinder Junrei	7:15:00	37,45,58
5	Virginia Blain	Suncrest Naomi	7:54:00	28,42,50
6	Debbie Pevy	Churinga Lite Mi Fire	8:23:00	36,41,46
7	Monica Majerowski	Valinor Park Sakim	8:29:00	42,44,48
8	Alan Lindsay	Kintamani Charisma	8:40:00	40,51,53
9	Bree Hollingsworth	Aloha Vest	8:55:00	35,49,47
---	Alan West	Ehsun Sahara	Lame L2	36,45,48
---	Bev Turner	Shazzam	Heart Rate L1	33,59
---	Luka Curtis	Macquarie Park Shafeeq	Heart Rate L1	41,60
---	Mitchell Ravallion	Danjera Jed	Lame L1	33,40
---	Katsumi Ishiguro	Keldon Park Sophena	Lame L1	42,51
<b>Lightweight Division</b>				
1	Shelly Ison	Aloha Fabian	5:06:00	31,41,44
2	Sally Fenner	Cherox Aladdin	5:24:00	36,48,48
2	Roz Edmunds	Everon Park Apollo	5:24:00	36,44,42
4	Amanda Bloxsome	Lady Geneive	6:35:00	34,36,51
5	Talea Hasko-Stewart	Blake's Heaven Bombora	6:44:00	37,48,50
6	Mary Hollingsworth	Wickwood Eli	8:55:00	39,46,51
---	Donna Scott	Rowallan Raven	Lame L2	37,43,46
---	Ella Ussher	Blake's Heaven Ventura	Lame L2	35,49,55
---	Fia Hasko-Stewart	Wantley Kaliph	Lame L1	33,42
<b>Junior Division</b>				
1	Sorsha Stuart-Rokvic	Blakes Heaven Angelico	6:08:00	33,45,53
2	Cybele Coddington	Burren-dah Narla	6:10:00	32,42,56
---	Isaac Majerowski	Conderosa Silver Shah	---	37 (Wdn)
---	Georgia Curry	Macquarie Park Banjo	Heart Rate L2	34,49,65

## Ride Name: Red Range AERA

Ride Distance: 160km

Date: 23/11/2012

Head Vet: Pat Hodgetts

Chief Steward: Barbara Timms

### Heavyweight

1	Christopher Bailey	Aloha Delegate	0:54:39	9:49:52
2	Greg Lyon	Chingford Just Dreaming	0:53:29	13:14:15
3	Troy Butler	Credo Summer Rain	0:39:28	13:48:11
---	Gary Thomas	Ben Mariah		Lame L5
---	Jake Gray	Sultan		Lame L4
---	Diane Munro	Akifa Farras Mangu		Lame L2
---	Dick Collyer	Lion Hunter		Lame L2

### Middleweight

1	Kristie Wright	Coolinda Park Kaliente	1:07:05	12:09:18
2	Sharon Foster	Sharabel Maleka	1:17:50	12:24:48
3	Ken Moir	Chelleason Rembrandt	0:37:48	12:57:21
4	Allison Knihinicki	Fenwick Finale	1:24:24	14:22:44
---	Jeni Martin	Jen Mar Ma Aj Mala		---
---	Terri McLeod	Sharabel Akaysha		---
---	Sonya Ruprecht	Yahweh-Salih Rasami		Lame L6
---	Camille Champagne	S'SHAADA SOLOMON		Lame L3
---	Julie Mohi	Arabiana Banama		Lame L3

### Lightweight

1	April Newman	Lasaan	0:29:15	12:02:04
2	Ruth White	Alamo Minelli	0:37:15	13:10:07
3	Allix Jones	Shellal Cattle King Flyte	0:44:05	14:22:40
4	Sharyn Wyatt	BJ	0:59:58	14:25:23
5	Xanthe Webb	Alcienne Dominion	0:42:36	14:25:43
---	Karen Fields	Cameo Inniskerry		---
---	Robin Young	Razorback Kadance		Disqualified L3
Junior				
1	Megan Stehouwer	Sasam	0:26:34	11:57:41
2	Jessica Fuhlbohm	Splendacrest Ulysses	0:33:13	12:24:44
3	Zac Hooper	Shemaih Bey Bert	0:58:05	15:29:06
---	Matilda Hose	Foxridge Merlyn		Lame L6
---	Brook Marshall	Fun 4 Us		Metabolics L5
---	Shantel Nagle	Conderosa Eternity		Metabolics L1

## Ride Name: Red Range AERA

Ride Distance: 90km

Date: 23/11/2012

Head Vet: Pat Hodgetts

Chief Steward: Barbara Timms

### Heavyweight

1	Rod Field	Brookleigh Louise	0:19:57	7:05:50
2	Bruce Moore	Summer Park Douglas Explorer	0:30:09	7:13:27
3	Allan Caslick	Beaujangles Te	0:07:19	7:30:54
4	Greg Garred	Shannonwood Ezar	0:25:44	7:34:53
4	Jaime Garred	Lea-Ma Park La Gold	0:26:47	7:34:53
6	Phil Coleman	Alnotarj Statistic	0:34:05	7:38:57
---	Tracee Steele	Hirstglen Louisville		---
---	Kathryn Priol	Performance Park Drovers La Ment		Lame L2
---	Steve Broadbent	Foxridge Kalypso King		Lame L2
---	Allyson Taylor	Fortaleza Rebel With A Cause		Lame L1

### Middleweight

1	Caroline Fitzgerald	Lanamere Boulette	0:17:27	5:20:01
2	Rod Strahan	Suncrest Sadaqas Pride	0:25:51	7:01:16
3	Tracey Hutchinson	Poets Corner Zsa Zsa	0:15:18	7:09:12
4	Carol Major	Major Luke	0:18:41	7:17:28
5	Leeanne Bartlett	Norfolk Park Comet	0:30:19	7:35:11
6	Hannah McQueen	Elfar Krystella	0:21:06	7:38:59
7	Debra McQueen	Googabilla Lodge Starlight	0:20:15	7:39:22
7	BonnieJayne Baker	Dumaresq Waltzing Matilda	0:29:17	7:39:22
9	Peter Kelly	Razorback Jack	0:24:06	7:57:22
10	Barbara Woods	Splendacrest Perfection	0:17:07	8:06:40
11	Gerard Bou	Moomba Lodge Bayley	0:17:00	8:06:44
12	Troy Roosen	Camillas English Rose	0:23:53	8:15:45
13	Maureen Feltham	Fenwick Razoul	0:38:04	8:29:42
14	Daphne Phillips	Shafiq	0:36:05	8:45:08
---	Sally Griffin	Magic Glenn Lumiah		---
---	Stephen Gray	Shaw Park Sweet Affair		Lame L3
---	Simone Krahnen	Kalkadoon Zorro		Lame L2
---	Jane Davidson	Magic Carpet		Lame L2
---	Dean Chamberlain	Annordean Cash		Lame L1

### Lightweight

1	Amanda Phillips	Kalkadoon Vienna	0:17:42	5:52:38
2	Kirsty Owen	Natham Park A'dishaan	0:21:00	5:55:14
3	Annette Chamberlain	Annordean Lady Lily	0:24:28	5:55:15
4	Cathy Ferguson	Ramalea Nick	0:30:44	5:57:25
5	Clare Fleming	Birramalee Queen of Hearts	0:30:24	5:57:36
6	Kelsey Irvine	Kelkette Park Dior	0:20:05	7:05:45
7	Ros Ryan	Cloudburst	0:34:00	7:38:57



8	Deanna Trevena	Dumaresq Party Girl	0:28:52	7:39:21
9	Neroli Mitchell-Cooper	Solvang Farm Mataevs	0:21:33	8:08:19
10	Lyn Dillon	Banfield Khamsin	0:17:44	8:25:05
---	Sue Todd	PPP Kool Pashin		Lame L3
---	Kate Pilley	Castlebar Belair		Lame L2
---	Carla Jones	Brookleigh Air Jordan		Lame L2

#### Junior

1	Sarah Huddleston	Aloha Farina	0:13:09	6:39:12
1	Gemma Dickensen	Melcot Bella	0:09:02	6:39:12
3	Mackenzie Robertson	Follydown Gai Emerald	0:17:23	7:24:48
4	Scarlet McQueen	Cearadale Jabez	0:20:34	7:39:21
5	Kyia-jane Badsworth	Poets Corner Bataan	0:20:17	7:54:21
6	Tayla Hadzi	Gums Kawielie	0:22:30	7:58:46
---	Sam Brooker	Hirstglen Lonestar		Lame L3
---	Stephanie Tulk	Bashan Captive		Lame L2
---	Sharn Brooker	Hirstglen Louisiana		Disqualified L1

## Ride Name: 2012 Red Range Sunday

Ride Distance: 120km

Date: 25/11/2012

#### Heavyweight

---	Matthew Gadsby	Ra Silver Dancer		Lame L4
-----	----------------	------------------	--	---------

#### Middleweight

1	Sonia Bonham	Box Hill Bullzeye	0:18:42	7:20:51
2	Caroline Fitzgerald	Lanamere Femmara	0:21:20	8:03:30
3	Laura Axsentieff	Fox Brush Custom Design	0:41:04	9:28:50
4	Allison Knihinicki	Velona Amadi	0:30:21	10:29:48
---	Carol Major	Major Luke		Lame L1

#### Lightweight

1	Amanda Powell	Summit Park Raz	0:19:31	8:03:31
2	Wendy Jones	Nioka Park Jag	0:36:39	8:05:29
3	Amanda Phillips	Kalkadoon Alfresco	0:25:54	8:08:08
4	Amanda Apperley	Jon De Le Jasper	0:26:50	9:15:55

#### Junior

1	Tayla Hadzi	Ausden Prince Mahal	0:13:33	7:20:48
2	Shantel Nagle	Windradyne Ballerina	0:21:46	8:55:48
3	Madeline Toft	Bremervale Savannah	0:18:59	9:28:28
4	Tayla Warren	Lilonda Sharjah	0:29:34	9:50:02

## Ride Name: 2012 AUSTRALIAN FEI Championships Sunday

Ride Distance: 120km 2 star 1 day

Date: 25/11/2012

#### Open

1	Con Bouzianis	Conderosa Rassim	0:18:03	7:56:00
2	Jennifer Annetts	Littlebanks Dizzy	0:23:11	8:00:30
3	Ute Jordan	Charaway Amici	0:26:57	8:01:50
4	Akhmed Pshunov	Ceona Citation	0:21:23	8:20:45
5	Judith Burton	Woodbourne Larry	0:29:44	8:51:26
6	Mark Freeman	Rowallan Justice	0:16:58	8:56:38
7	Courtney Freeman	Cedar Ridge Fire N Gold	0:17:02	8:56:39
8	Emma McCormack	Jezabelle Sweet Dreams	0:26:24	9:03:29
9	Allan Watts	Shakla's Sudden Impact	0:27:09	9:03:32

10	Gregg Fields	Dunwingeri shahman	0:26:08	9:08:08
11	Malin OLSSON	Brookleigh Silhouette	0:28:03	9:45:58
12	Sasha Laws-King	Heathfields Sheisha	0:14:26	10:17:42
13	Warwick Toft	Bremervale Shahrastani	0:26:42	10:20:46
---	Ruth Van der Wegen	Aloha Ameer		---
---	Jane Radney	West Coast Natanya		---
---	Tami Parnell	El Jabal Brook		---
---	Michael Taylor	Breathe		Lame L1

#### Youth

1	Natasha Willemse	Matrix Maker	0:21:25	7:56:01
2	Alexandra Toft	Centre Fold te	0:24:35	8:00:01
3	Colleen Krahnen	Charlotte te	0:32:30	8:00:10
4	Erin Lee Krahnen	Tora Karlaya	0:27:04	8:01:24
5	Georgia Toft	Bremervale Wyatt Earp	0:16:11	9:45:58
---	Allix Jones	Castlebar Jumeirah		Lame L4

## Ride Name: 2012 Australian FEI Championships

Ride Distance: 160km 3 Star 1 Day

Date: 24/11/2012

#### Open

1	Matthew Sample	Brookleigh Ricardo	0:28:05	9:32:26
2	Jennifer Gilbertson	Kurrajong Shadad	0:38:43	9:56:32
3	Sonya Ryan	Kholonial Amigo	0:46:05	12:50:19
---	Jennifer Annetts	Churinga Goldfire		---
---	Tony Bateman	Cheval Arabe Daybu		Lame L3
---	Josias Willemse	Cheraz Silver Pocket		Metabolics L2
---	Tom Bouzianis	Conderosa Sara		Lame L1

#### Youth

1	Andrew Mackinder	Sundown Park Cariad	12:49:14	0:36:45
---	------------------	---------------------	----------	---------

## Ride Name: 2012 Australian FEI Championships

Ride Distance: 90km 1 Star 1 Day

Date: 24/11/2012

#### Open

1	Emily Streckfuss	Webbs Creek Starlight	0:40:37	4:43:20
2	Leigh Ann Sample	Brookleigh Commander	0:22:16	4:43:28
3	Sue Jones	Hinterland Hellfire	0:18:32	4:52:21
4	Bill Ward	Al Wathba Maghi	0:24:12	4:52:47
5	Susan Sutcliffe	My Cadet	0:27:19	4:57:37
6	Wendy Dower	Castlebar Truffle	0:18:52	5:14:35
7	Ben Hudson	Littlebanks Emira	0:25:41	5:18:20
8	Craig Bond	Bond Addiction	0:38:24	5:36:24
9	Akhmed Pshunov	Sample Park Zachary	0:17:51	5:52:48
10	Judith Burton	Woodbourne Star Flash	0:34:10	5:55:21
11	Linda Tanian	Castlebar Contraband	0:13:26	6:20:09
12	Emma McCormack	Twynham El Nasiriyah	0:29:49	6:59:02
13	Tami Parnell	Churinga Flyer	0:15:58	7:09:12
14	Thomas Kelly	Castlebar Citation	0:18:34	7:55:48
15	Katrina Bodewes	Attalah Resyk	0:20:43	8:24:54
---	Brook Sample	Brookleigh Faith		Lame L2
---	Wendy Jones	Castlebar First Light		Lame L2
---	Kate Appleby	Chaswyck The Maverick		Lame L1
---	Bridget Nottle	Willowmead Sassy		Lame L1
---	Fiona Fenech	Bellarine Amigo		Lame (P/R)

#### Youth

1	Jessyca Dakin	Caramela Morocco	0:35:58	4:39:39
2	Britanny Johnson	Littlebanks Antwonett	0:25:50	5:18:21

3	Erin Lee Krahnen	Glengannon Azazael	0:12:38	5:39:20
4	Colleen Krahnen	Moondarra Diannah	0:12:37	5:39:21
5	Harrison Berg	Castlebar Condor	0:17:51	6:25:43
6	Tahlia Franke	Jezabelle Oceans Of Fire	0:17:07	7:24:54
7	Mia Bodewes	Booramby Jacob	0:28:02	8:24:48
---	Noni Seagrim	Akifa Farras Titan		---
---	David Anderson	Vandiemman Princess Ellie		Metabolics L3
---	Tayla Warren	Castlebar tomcat		Lame L2
---	Jordan Baker	Summervale Brian		Metabolics L1

## Training Ride Results

### Ride Name: Sussex Inlet

Ride Distance: 40km Training

Date: 11/11/2012

Luka Curtis	Macquarie Park Dassan	42,40
Stacey Wood	Yukon Park Shiloh	37,44
Gavin Peacock	Chop Chop	36,42
James Marshall	Bard	38,47
Belinda Burgess	Daisy	45,44
Mathew Broome	Shafiq	45,42
Murray Woods	Castlebar Casbah	46,42
Hailey Knight	Burren-Dah Krysler	33,48
Tiarna Young	Nick	36,44
Sheree Carter	Elijah	30,54
Mark Johnson	Sharahd Chemoss	40,43
Narelle Bush	Rowallan Seek	44,42
Kerrie Payne	Mitanni Rikkala	36,41
April Newman	Marjon	38,36
Vicki Mathew	Mitanni Tamim	42,36
Amanda Bloxsome	Lady Geneive	36,38
Rhea Marnerwhite	Chester	36,42

### Ride Name: Sassafras

Ride Distance: 40km Training

Date: 25/11/2012

Stacey Wood	Yukon Park Shiloh	39,40
Belinda Burgess	Daisy	35,52
Marion Grove	Wickwood Domanic	40,47
Murray Woods	Calabash Casbah	42,54
Emma Miles Howe	Blakes Heaven Summer Wind	34,44
Lucy Tynan	Zoey	41,54
Hanna Eronen	Torredean Barney	36,52
Sharee Cassell	Inshallah Nefertari	42,52
Sheree Carter	Elijah	31,46
Kerrie Payne	Mittani Rakkala	31,48
Vicki Mathew	Cearadale Hanaani	34,55
Narelle Hildebrand	Lady	37,54
Holly Usher	Frosty	41,54

### Ride Name: Kiwarrak Cup

Ride Distance: 40km Training

Date: 28/10/2012

Dean Chamberlain	Balin	42,48
Annette Chamberlain	Annordean Lady Lily	35,44
Denise Wagner	Nyora Angel	37,47



Warren Baird	Diamond	36,42
Carol Layton	Omani City Smoke	33,37
Brieann Morris	Silver Romance	40,50
Keith Sumpner	Fonda	36,48
Kathy Holtrust	Romac Jimmy	38,45
Ariel Riek	Sakhi Wings	38,49
Robyn Coombes	Montville Abigail	32,44
Nicolle Brown	Kie-Al Nasarian	40,45
Marg Higgins	Miss Star Chip Sadaqa	45,48
Annette Gifford	Porcelyn Bey	30,41
Adele Gifford	Serenity Bey	53,41
Lynn Coles	Pinedene Robbie	33,39
Dielen Schuelein	Shiraz	40,42
Sophie Diffey	Fairview Dream Seeker	36,39
Peter Grelck	Karabil Abbra	37,41
Linda Green	Suncrest Saffire	48,45
Loesje Doherty	Suncrest Count Leo	37,40
Peter Harrison	Phoenix	34,43
Jody Harrison	Marvin	40,53

## Social Riders

### Ride Name: Sussex Inlet

Ride Distance: 25km Social

Date: 11/11/2012

Kim Van Kruyssen	Clancy
Britney Bryson	Chester
Holly Usher	Frosty
Narelle Hildebrand	Lady
Elaine Kirby	Turingal Park
Amanda Overall	Leechdale Silver
	Shimmah
Debra Cotton	Buddy
Jade Cannan	Nugget
Martin Evans	Flicka
Kellie Mant	Elvis
Kim Porter	Twist
Chris Clarke	Flash
Nicolle Morgan	Wii
Angela Peters	Wakoda Xtreme Affect
Maddy Elliott	Shiloh
Eileen Spence	Oaky
Brooke McPherson	Madge
Rob Hay	Missy
Sonia Holdsworth	Diva
Kristen Kalkman	Jupiter
Leah Montefiore	Tanami Russell
Kerrie Bonser	Mary
Jennifer Corrales	Burren Dah Lantra
Bindi Reinhold	Goondoloo Jannaci
Kim Treyvaud	Amethyst Park Sweet
	Harmony
Lorraine Skipler	Jaffa

### Ride Name: Sassafras

Ride Distance: 20km Social

Date: 25/11/2012

Charlene Malone	Bella
Elaine Kirby	Turingal Park Nicholas
Terese Haberle	Amaretto
Kellie Mant	Elvis
Sally Willoughby	Riley
Lynda Folkard	Jupiter Jayyid
Kay Burman	Buddy
Lucy Weir	Newhaven Tanami Rose
Kristen Kalkman	Jupiter
Narelle Bush	Rowallan Seek
Leah Montefiore	Tanami Russell
Kerrie Bonser	Mary
Maddie Elliot	Shirlio
Debra Cotton	Buddy
Martin Evans	Flicka
Kim Van Kruyssen	Clancy
Donna McKeon	Ansel
Rob Hay	Missy
Dayna Park	Shakira
Narelle Drury	Corso Zach
Hayley Warren	Dan
Henry Goodall	Moka
Garry Nelson	Billy
Zoe Warren	Levi
Glenda Jones	Rupert
Robyn Nelson	Bailey
Sally Herne	Kay
Geoff Cochrane	Jonny James

# Ride Name: Kiwarrak Cup

Ride Distance: 20km Social

Date: 28/10/2012

Bridget Isles  
Karen Isles  
Stephanie Hunter  
Taylah Oats  
Alice Smith  
D McKee  
Clemence Wise  
Shirley Sumpner  
Kathryn Warwick  
Denis Dwain  
Linley White  
Robyn Thomas  
Jodie Hollis  
Michelle Burns  
Jacqueline Bynes

Echo  
Charlie  
Jet  
D-Lua Park Melodie  
Augustus  
Daroy  
Shannara  
Dora  
Pearl  
Mambo  
Holly  
Lulu  
Forskye Warlord  
Forskye Harmony  
Cruze Control



**Top Right: Successful novice horse and rider combination, Jess Federow and Akifa Farras Mangu, with Paddy Smith on Akifa Farras Titan.**

**Left: Frank Mollema on Littlebanks Crystal Wings**

**Above: Kristen Proudfoot on Tim Tam and Searle Johnston on Boris in the 40km training ride**

**Cybele Coddington on Burren-dah Narla and Martin Gregson on Burren-dah Gladiator**

**Photos by Andrew Hennell**



## **Committee Notices**

### **Attention Ride Secretaries**

Following a recommendation from the AERA International Committee (AERA IC), the AERA has agreed that a \$5.00 affiliation fee should be paid to the AERA IC for each horse entered into a FEI ride. Ride Organisers should add this amount to their ride entry fee.

AERA Inc

### **Attention Chief Stewards**

Would you please ensure that all:

- Invasive Treatment Forms, Rider reports,
- Rest Orders and
- Log Books

are correctly filled out.

Please take the time to check that all required areas are correctly filled in and that the names are spelt correctly.

Belinda Hopley – for the NSW SMC

## ***NSW ERA Notice***

***Horse Yards:*** Riders are reminded of their duty of Care with regard to Horse Containment at rides. There have been two incidences this year that have resulted in injuries serious enough to withdraw from the ride, with one of those horses receiving injuries serious enough to be out for quite a few months.

**So please, think about how and where you contain your horse and try to have someone supervise your horse at all times.**

**NSW SMC**



## NOMINATION FOR NSW ERA COMMITTEE

NOMINATION (Name): .....M'Ship No: .....

I hereby agree to this nomination

Signature: .....Date: .....

NOMINATED BY (Name): .....M'Ship No: .....

Seconded by (Name) .....M'Ship No: .....

PROFILE OF THE CANDIDATE: (100 words or less)

.....

.....

.....

.....

.....

.....

.....

.....

## ANNUAL GENERAL MEETING

New South Wales Endurance Riders' Association Inc.

### APPOINTMENT OF PROXY

#### Proxy:

Name: ..... (M'ship No.) .....

I hereby appoint the above person as my proxy to vote on my behalf at the Annual General Meeting of the New South Wales Endurance Riders' Association Inc. and at any adjournment.

#### Appointed by:

Name: ..... (M'ship No.) .....

(Signature) ..... Date:..... / ..... / .....

# NSW Veterinary List

Nadine Allan	Gilgandra	6847 1129
Anthony Bennett	Berry	4464 1899 / 4464 2147F
David Brown	Kiama	4236 0554
John Brown	Tenterfield	6736 2233 / 6736 2833f
James Carroll	Manly	0433 256590
Don Crosby	Dubbo Grove	6885 5544
Chris Dowey	St Mary's	96233970 / 96238800F
Brian Dellow	Oberon	6336 1596
Ray Gooley	Mudgee	Contact NSW ERA
Kym Hagon	Manilla	6785 2385
Emma Haslem	ACT	0411 249 729
Ilona Hudson	Medowie	49829899
Donald Hudson	Nelson Bay	6736 1033 / 4981 5505f
Rochelle Joyce	Gunning	0408 481 534
Karim Kooros	Bowral	
Glynis Kuipers	Sth Nowra	4447 8172
Robyn Mather	Medowie	0418 876848
Adrian Owen	Wingham	(02) 6557 0000
Ross Penrana	Dubbo	6884 9777
Sarah Pollard Williams	Wagga Wagga	0427 231 193/69332967
Heather Reick	Crescent Head	0447307676
Steve Roberts	Gundaroo	0413 759226
Jim Roger	Jerrys Plains	0412 521848
Jantein Saltet	Young	0429 991665
Georgiana Sheridan	Church Point	9979 2076
Andrew Speer	Tamworth	6765 4244 / 6765 4338f
Emily Streckfuss	Kurrajong	0400 032153
Sarah Van Dyke	Armidale	0405 751817
Britta Wallner	Scone	Contact NSW ERA
Matt Walker	Thirlmere	4681 84760f

## Not Accredited *but willing to help*

Rachel Bailey	Sth Berry	4447 8172
Claire Dennis	Wagga Wagga	0427 003031
Terri Eckel	Bathurst	0420 973810
Darien Feary	Camden	4655-0777
Elizabeth Gale	Taree	6552 2633
Tamaryn Grimmer	Barraba	0418 269769
Heather Glover	Cooks Gap	0409 826423
Alix Haig	Dubbo	0428 142602
Emma Haslem	ACT	0411 249 729
Nikki Hui	Tamworth	6766 3088
Amy Little	ACT	0418 458 982
Peter Lauenders	Cowra	6341 3113 / 6342 1795f
Peter Prendergast	Collaroy	99718487 / 9971 6708f
Tom Pritchard		0413447370
Kelly Seres	Cowra	6341 3113 / 6342 1795f
Daniel Sims		0427 322 093
Hazel Steven	Wyong Ck	0427 299935
Andrew Thompson	Mittagong	4872 2408
Megan Vetter	Dubbo	0400 678183

# Ride Bases Map

The NSWERA Web page now has a Google map with 'Find it' features that will show the distribution of ride bases through NSW and provide a map with directions from your home to the ride base.

To access the map just go to **www.nswera.asn.au**. When you get there just click on the "NSW Ride Base Map" towards the top of the screen.

## **To use the map: -**

- Click on the ride base in the list on the left.
- A text box will pop up near the flag for the ride base.
- Click on get directions 'to here'.
- Enter your hometown in the start address.

## **Click 'GO' and print off the map and directions.**

**If you have a navigator in your** vehicle the map coordinates are shown in the text box, but a word of caution when using a navigator to go to a map grid reference, navigators are programmed to find the most direct route (as the crow flies), and as you get close to your destination they sometimes want to turn you down a side road or even a forest trail.

## **Ride organisers**

### **To have a ride base added to the map,**

1. Go to Google on the internet.
2. Select 'Maps' from the menu bar at the top.
3. With a map of Australia showing.
4. the curser (a little hand) on the area you're interested in, right click and select 'Center map here'.
5. Slide up the scale ladder a little.
6. Repeat 4&5 until you have zoomed in on the area.
7. Now select 'Satellite' to see an overhead picture of the area.
8. Put the 'Little Hand' on the gateway to the ride base, right click and select 'Directions from Here'.
9. A green flag will appear at the spot and a 'Get directions' box will appear in the top left corner.
10. If the flag is not quite right, click and drag it.
11. In the 'Get directions' box against flag 'A' will be the map grid reference for the spot chosen, it will look like ( -30.294007,147.498579)
12. Jot down that reference with the ride name and email it to me at 'vpe63190@bigpond.net.au'.

**To check we have located the marker correctly, or if the ride base has been moved, zoom in on your marker on the Ride Bases Map as described above, switch to Satellite and check the position of the marker. If it is in error follow the procedure above and email me the details.**

Also run some tests approaching your ride base from different directions and note any anomalies, see the Shahzada text box for an example.

**Regards, Tom Perkins snr 20435**



## DOWNLOADS AT THE NSWERA WEB SITE

[www.nswera.asn.au](http://www.nswera.asn.au)

The Internet has become a wonderful tool to equip ourselves with information. This means that information is now at your finger tips regarding your sport in NSW at [www.nswera.asn.au](http://www.nswera.asn.au)

The “Home” page of the web site is a great place to start. It will highlight important current issues and will guide you through the rest of the website.

Tabs on your Home Page include –

**Ride Calendar** where you can find a full list of upcoming rides, contact details for ride secretaries, ride previews and ride results.

**Prenomination** where you can prenominate to ride secretaries via email

**NSW Ride Base Maps** – details how to find your way to a ride base and also how Ride Organisers can list their rides on the Map.

**Point Score for NSW**

**Contacts** to email NSWERA Secretariat, Newsletter or Secretary

**Forms** - all the forms you may need such as Membership, Logbooks, Insurance, Horse Identification, etc.

**Starting Out Guide** - Notes on Getting Started in Endurance riding.

**Committee** contacts

**NSW FEI** information

**Constitution** – print off a copy

**Links** to other Associations and the AERA

**Insurance** – Requests for Certificate of Currency from AON; Claims Procedures; etc.

New innovations that will be coming to your web site in the near future will be online Membership Forms with Credit Payment opportunities, as well as merchandise purchasing.

So, keep in touch with your sport through [www.nswera.asn.au](http://www.nswera.asn.au). You'll get a surprise at the amount of information on there for you. Remember, this is your website, so stories, photos and articles of interest are always a welcome addition.

# NSW ERA Ride Booking Procedures

1. A ride must be booked a minimum of three months prior to the proposed date for the ride. This requirement may only be waived with the consent of the State Management Committee (**SMC**) under exceptional circumstances.
2. Ride Committees must be incorporated with the Department of Fair Trading and a copy of the Certificate of Incorporation forwarded with Booking Form.
3. Entry fees for all sections of the ride must be shown on the Booking Form and advertised in the Newsletter when inserted in the Ride Calendar.
4. Rides being conducted to replace cancelled rides must have permission from the NSW ERA SMC before the ride is advertised ANYWHERE.
5. Existing rides that have run on the same date for consecutive years will have preference for that date over new rides to protect the survival of the existing rides.
6. If a new ride is allocated a date other than as requested, that Ride Committee must change their date in accordance with the Committees decision.
7. A \$10.00 Booking Fee is payable when lodging the Ride Booking Form.
8. A \$50.00 Bond is payable if this is not already held on behalf of the ride Committee. This bond may be used for the next ride by that Committee if all paperwork is in on time.
9. The Ride Booking Form will indicate the Ride Committee's request for their ride to be dual-affiliated with another State.
10. A letter will be forwarded to Ride Committees one month prior to their ride requesting confirmation of the ride's Head Vet and Accredited Chief Steward.

# Logbook & Identification Procedures

A horse is a novice for a minimum of 90 days from the date on which it successfully completes its first affiliated endurance ride and may only attempt four rides during this period, ie if a horse successfully completes its first ride on 1st July, it cannot upgrade to endurance status until after 28th September and may only enter four rides during this period. There is no limit on the time it takes to reach endurance status. Your horse can be a novice for as many months (or years) as you like.

When your horse has successfully completed 240 kms of affiliated endurance (not training) rides, it can be upgraded from novice (blue log book) to endurance (yellow log book) status.

Ensure the brands are clear. If not, have the horse re-branded or microchipped (Refer to rule H5.2(a) - (b) ) and H5.3).

Have a vet complete the horse identification form (written description and diagrams) and sign it. Identification and microchipping can be done at most rides, but it is advisable to check with the ride secretary beforehand.

Complete the logbook application form and attach I.D. form, novice horse logbook and the appropriate fee.

Please allow 10 working days from date of posting for return.

It is essential to retain a copy of the I.D. form and perhaps have it laminated for the future.

PLEASE NOTE An Endurance Horse Logbook will not be issued unless a signed Veterinary Identification Form **is** enclosed with the application. The I.D. in the novice log book is NOT acceptable.

If there is anything that you are unsure of, please do not hesitate to phone me.

**Sonya Ruprecht, Log Book Registrar, NSWERA**

**(02) 6553 8640**

**Post Office Box 6627, Chatham NSW 243**





# **Australian Endurance Riders Association Inc.**

## **Transfer of Ownership Procedures**

It is the responsibility of the purchaser of the horse to notify the State of the change in ownership details. It is important that the correct person be registered as the owner of the horse as this assists with the correct allocation of National and State distance and pointscore awards as well as identifying the persons responsible for the horse when disciplinary actions need to be instituted.

### **Process for Changing Ownership Details**

When a sale of a horse occurs and the horse has had a logbook issued it is the responsibility of the new owner to notify the State of the change of ownership. A transfer of ownership form must be completed and forwarded to the State, together with a cheque for \$11 and the logbook.

Once the transfer of ownership form is received the logbook can be amended with the change in owners and the transfer verified by the Logbook Secretary/Registrar.

#### **Procedure for Recording Change of Ownership**

Transfer of ownership forms are to be made readily available to all members, preferably through the State Newsletters or upon application to the Logbook Secretary/Registrar.

Once a logbook, transfer of ownership form and fee are received the Logbook Secretary/Registrar will:

1. Record the ownership transfer into the logbook.
2. Verify the transfer.
3. Return the logbook.
4. Record the ownership transfer into the computer records of the State Division.
5. Keep a copy of the ownership transfer form and forward the original to the AERA Registrar.
6. Forward the \$5 fee to AERA.



# AUSTRALIAN ENDURANCE RIDERS ASSN. INC.

## ANNUAL LOGBOOK RETURN

### Current Horse Details

To help maintain a current register of all AERA Logbook horses, please fill out relevant details of all endurance horses in your care and return to your State Registrar with your membership form. Membership may be withheld if this form is not attached.

Owners Name: \_\_\_\_\_

Address: \_\_\_\_\_ Postcode: \_\_\_\_\_

Membership Number: \_\_\_\_\_

Name of Horse	AERA No.	End / Novice

To assist in maintaining our records, please advise of any horse that has a logbook that is no longer competing for any reason. e.g. retired, sold, died etc.

Name of Horse	AERA No.	Reason

If the horse has been sold please provide details.

Name of Horse	AERA No.	Sold to another member (give name)	Sold & no longer in sport	Sold overseas



## AUSTRALIAN ENDURANCE RIDERS ASSOCIATION INC. MEMBERS DANGEROUS ACTIVITY ACKNOWLEDGEMENT

In consideration of the New South Wales Endurance Riders Association Inc. ("the Association") permitting me to participate in an event conducted by the Association:

This agreement is compulsory and is entered into by:

Participant 1 Name: .....M'Ship No. ....

Participant 2 Name: .....M'Ship No. ....

And covers my participation in all endurance riding activities affiliated with or endorsed by the Association.

### **I understand that –**

There are potentially significant risks and hazards involved with endurance riding, and that horses are powerful and potentially dangerous animals;

There are certain inherent risks in the terrain, public roadways, weather and other forces of nature which may arise during my participation in endurance riding, and that such risks may vary from ride to ride;

The Ride Organisers and the State Management Committee make every effort to ensure the safety of the ride base and ride course, and the safety and well-being of all participants and their horses, and to minimize any risk of injury, death or loss due to negligence or omission by the organisers and the Association;

It is compulsory to wear an approved safety helmet at all times while on a horse at any event affiliated or endorsed by the Association;

I am responsible for the control and welfare of any horse in my care or which I elect to ride and for ensuring that I am capable of managing any such horse in the interests of my own safety, and that of other participants, horses and property;

If I fail to comply with any reasonable instruction, request or direction by Ride Organisers or other designated officials, upon my being so warned by the appointed Chief Steward, she/he may terminate any further participation by me, such termination being at my expense, and I waive any claim or refund;

I am free to withdraw my participation at any time should I determine that to do so is in the interests of my safety and well-being or that of other participants and horses.

### **I agree –**

That if I have a medical condition or impairment which may affect my capacity to act safely and in the best interests of the welfare of myself, other participants and horses, then I take full responsibility for any consequence of such medical condition or impairment;

To comply with AERA and the Association's Ride Rules and any reasonable instruction, request or direction from ride officials as to the safety and well-being of myself and other participants, and the management of horses;

That due to diseases such as equine influenza, the Department of Primary Industries or other state or commonwealth government body, may restrict or prevent the movement of horses, vehicles and personnel for a period of time, otherwise known as a "standstill". I acknowledge that a standstill is a risk of competing and agree to pay any costs or expenses incurred by any person or organisation for and behalf of my horse(s) as a result of the standstill.

### **I have read and understood the above document**

Signature of Participant 1: .....Medical Conditions: .....

Signature of Participant 2: .....Medical Conditions: .....

### **Declaration by guardian:**

As guardian of the participant:

I warrant the accuracy of the assurances and warranties given above on behalf of the participant;





# AUSTRALIAN ENDURANCE RIDERS ASSN. INC.

## ANNUAL ENDURANCE HORSE REGISTRATION

All endurance horses that are currently registered with an annual registration fee and intend to compete in 2012 must pay the annual fee of \$11 per horse. This should be paid with your membership renewal for 2012.

**Any endurance horses not registered for 2012 will not be allowed to compete.**

Labels are to be placed inside the front cover of the Logbook. To apply for your labels, please complete the following details and forward with your payment to:

***Insert Registrar Details***

**Please make cheques out to: Insert Details**

Owners Name: \_\_\_\_\_

Address: \_\_\_\_\_ Postcode: \_\_\_\_\_

Membership Number: \_\_\_\_\_

Name of Horse	AERA No.	Annual Fee (\$11 / horse)

To assist in maintaining our records, please advise of any horse that has a yellow Logbook that is no longer competing for any reason.

Name of Horse	AERA No.	Reason



## AUSTRALIAN ENDURANCE RIDERS ASSOCIATION

### APPLICATION FOR DISTANCE SCROLL

I wish to apply for a .....km scroll for the horse listed below, I have enclosed the appropriate fee (if any).

#### Horse Details

Name of Horse:	
Other horse names that may have been used:	
Log Book No:	Sex: S M G (please circle)
Date of Birth:	Breed:
Breed Registration No:	
Sire:	
Dam:	
Breeder:	
Owner:	

#### Scrolls are available as follows:

- 300km \$10.00 each.  
Available to any horse that has successfully completed 300km of affiliated endurance rides of 80km or over in **ONE** riding division or has successfully completed the Quilty in under 15 hours.
- 
- 800km \$10.00 each.  
Available to any horse that has successfully completed 800km of affiliated endurance rides of 80km or over in **ONE** riding division.
- 
- 1600km Free on behalf of AERA  
In recognition of any horse successfully completing 1600km irrespective of riding division.
- 
- 3000km Scroll & Trophy free, issued on behalf of AERA.  
In recognition of any horse successfully completing 3000km irrespective of riding division.
- 
- 5000km Scroll & Trophy free, issued on behalf of AERA.  
In recognition of any horse successfully completing 5000km irrespective of riding division.
- 

AERA Certificates of Merit are presented at 1500km intervals over and above 5000km (6500km, 8000km, 9500km etc). Scrolls for distances of 3000km and above are awarded at the Tom Quilty each year, all other scrolls can be applied for at any time.

Send your completed forms (plus any applicable fee) to the AERA Registrar:

Jo Bailey  
3008 Abercrombie Road  
BLACK SPRINGS NSW 2787 Phone: (02) 63358121 ah

#### Notes:

- (1) Unaffiliated and training rides are **NOT** counted.
- (2) Unsuccessful rides (vet outs, withdrawals etc) are **NOT** counted.

# Ride Secretaries

**Gay Bonham**

4 Reservoir Road  
Manilla NSW 2346  
(02) 6785 2055  
Email: [jgbonham@bigpond.net.au](mailto:jgbonham@bigpond.net.au)

**Sonia Bonham**

"Tarralea" Armatree NSW 2828  
68485345  
Email: [gavinandsonia@bigpond.com](mailto:gavinandsonia@bigpond.com)

**Jenny Cameron**

751 Parma Road,  
South Nowra NSW 2541  
Phone: (02) 4447 8999

**Neil Clarkson**

113 Glenhaven Drive  
Glenhaven NSW 2156  
0427 258 291  
Email: [neil@kwikkopyliverpool.com.au](mailto:neil@kwikkopyliverpool.com.au)

**Robyn Coombes**

749 Beechwood Road  
Beechwood NSW 2446  
(02) 6585 6761  
Email: [robcoombes@people.net.au](mailto:robcoombes@people.net.au)

**Lee Curtis**

1475 Freemantle road,  
Bathurst NSW 2795.  
0263374195  
Email: [leeruthcurtis@gmail.com](mailto:leeruthcurtis@gmail.com)

**Mark Dunmill**

7 Production Place  
Penrith NSW 2750  
(02) 4732 1007

**Courtney Freeman**

135 Cedar Ridge Rd  
Kurrajong NSW 2758  
0417 248 172  
Email: [info@cedarridgestables.com.au](mailto:info@cedarridgestables.com.au)

**Charlie Gauci**

106 River Road  
Emu Plains NSW 2750  
(02) 4735 3014  
0409 202 224  
Email: [charlie@tracer.net.au](mailto:charlie@tracer.net.au)

**Rebecca Hogan**

"Tayen" Vinicombes Road  
WINGELLO NSW 2579  
0412 600 173  
Email: [bechogan@newmoonstud.com.au](mailto:bechogan@newmoonstud.com.au)

**Shelly Ison**

77 Gorindah Road  
Falls Creek 2540.  
(02) 4447 8580.  
Email: [shelly1@shoal.net.au](mailto:shelly1@shoal.net.au)

**Wendy Jesson**

PO Box 743  
Nowra NSW 2541  
44230552

**Col Lewis**

15 Crisp Drive  
Wagga Wagga NSW 2650  
Telephone: 0415 453 434

**Alan Marshall**

PO Box 1590  
Nowra NSW 2541  
Ph: 44228818 [kirkh@skymesh.com.au](mailto:kirkh@skymesh.com.au)

**Meghan Matters**

860 Sherwood Creek Road  
Upper Corindi NSW 2456  
Email: [manom@aussiebroadband.com.au](mailto:manom@aussiebroadband.com.au)



---

**Abby McMurrich**

675 Careys Road  
Hillville NSW 2430  
(02) 6550 6337  
Email: [abbymcmurrich@hotmail.com](mailto:abbymcmurrich@hotmail.com)

**Megan Menzies**

“Craig Gowan”  
243 Menzies Lane  
Coolamon NSW 2701  
Mobile: 0428 278536  
Home: (02)69 278536  
Email: [rmmenzies@bigpond.com](mailto:rmmenzies@bigpond.com)

**Greg Moore**

744 Slopes Road  
The Slopes NSW 2754  
45732357  
Email: [gregoryamoore@hotmail.com](mailto:gregoryamoore@hotmail.com)

**Kate Moran**

(02) 4473 5906

**Melanie O'Flynn**

21 Jindabyne Street,  
Duffy ACT 2611.  
02 62888195.  
Email: [sheils@netspeed.com.au](mailto:sheils@netspeed.com.au)

**Rick Owen**

“Idylway” Tarrabandra Road  
Gundagai NSW 2722  
(02) 6944 1628

**Tami Parnell**

5705 Orara Way  
Braunstone NSW 2460  
67342253  
Email: [robbyn.parnell@det.nsw.edu.au](mailto:robbyn.parnell@det.nsw.edu.au)

**Angelina Patterson**

Ercildoune  
Munderoo Road  
Tumbarumba NSW 2653  
Email: [marsto@bordnet.com.au](mailto:marsto@bordnet.com.au)

**Rowena Robinson**

36 Forest Road  
Falls Creek 2540  
(02) 4447 8814  
Email: [fivegreys@shoalhaven.net.au](mailto:fivegreys@shoalhaven.net.au)

**Sonya Ruprecht**

17473 Pacific Hwy  
Ghinni Ghinni NSW 2430  
(02) 6553 9523  
Email: [dsruprecht@westnet.com.au](mailto:dsruprecht@westnet.com.au)

**Noni Seagrim**

Tin'ut Brindabella Valley Road  
Brindabella NSW 2611  
62362129  
Email: [nseagrim@hotmail.com](mailto:nseagrim@hotmail.com)

**Judy Shore**

21-27 Schwebel Lane,  
Glenorie NSW  
Phone: 9652 1393  
Email: [stanshore@bigpond.com.au](mailto:stanshore@bigpond.com.au)

**Kate Smith**

94 North Street,  
Murrumburrah NSW 2587  
Mobile: 0411 795 278  
Email: [caseyamandasmith@hotmail.com](mailto:caseyamandasmith@hotmail.com)

**Mette Sutton**

2 Cox Street  
Mudgee NSW 2850  
(02) 6372 4960 (ah)  
Mobile: 0400 308 626  
Email: [mette.sutton@bigpond.com](mailto:mette.sutton@bigpond.com)

**Sue Todd**

285 The Gullies Road  
Glen Davis NSW 2846  
(02) 6379 7218  
Email: [suetodd@activ8.net.au](mailto:suetodd@activ8.net.au)

# The 13 Month Rule

Please remember that if your horse does not successfully complete an endurance ride for 13 months, it's status reverts to Novice and you must complete your next ride in novice time.

Should you complete a ride outside the novice times—you face disqualification and your points and mileage disallowed.

**Remember—ignorance of this rule is no excuse.**

**NSW ERA Committee**

## Tie Up Your Dogs

Riders are responsible for the behaviour of their support crews and friends. **This extends to dogs associated with their camp**, which must be restrained at all times, either on a lead or secured in a float or vehicle.

The Chief Steward may disqualify a rider if that riders' support crew causes disruption detrimental to the running of the ride. Refusal to restrain a dog (of any size) after being requested to do so by the Chief Steward, or an official of the Organising Ride Committee, may also lead to disqualification of the rider.

**NSW Committee**

# Register of Chief Stewards

Peter Bonham – “Clancy” Tooraweenah, NSW 2831. 6825 4330.

Jeffrey Bonham – 4 Reservoir Road, Manilla, NSW 2346. 6785 2055 –  
[jgbonham@bigpond.net.au](mailto:jgbonham@bigpond.net.au)

Graham Burchell – Daruka Road, Tamworth, NSW 2340 - 0429663638.

Chris Cheney – 86 East Street, North Wagga, NSW 2650. 6921 5247-  
[ccheney@optusnet.com.au](mailto:ccheney@optusnet.com.au)

Neil Clarkson – 113 Glenhaven Road, Glenhaven, NSW 2156. 0427 258 291 -  
[neil@kwikkopyliverpool.com.au](mailto:neil@kwikkopyliverpool.com.au)

Phil Coleman – 174 Longpoint Drive, Lake Cathie, NSW 2445. 6585 4055

Louise Counsell – Lot 190 Princes H'Way, Bendarah, NSW 2536. 4478 6288 –  
[louisec@ipstar.com.au](mailto:louisec@ipstar.com.au)

Lesley Freeman - 1269 Beaconsfield Rd, Oberon, NSW 2787. 6336 3544 –  
[info@cedarridgestables.com.au](mailto:info@cedarridgestables.com.au)

Hayden Fisher – 74 Walsh Rd, Budgee Budgee, NSW 2850. 62733 3932 –  
Email: [gailtaj@yahoo.com.au](mailto:gailtaj@yahoo.com.au)

Graeme Gilbertson – Rosemont Estate, Webbs Creek, NSW 2775. 4566 4442–  
[ggilbertson@bigpond.com](mailto:ggilbertson@bigpond.com)

Max Gowan – c/- Termeil Post Office, Termeil, NSW, 2539. 4457 1584.

Belinda Hopley – 63 Walga Close, Carwoola, NSW 2620. 6238 2293 -  
[belinda.brian@netspeed.com.au](mailto:belinda.brian@netspeed.com.au)

John Howe – Glen Echo, Greengully Road, Meroo, NSW 2850. 6373 7750 –  
[greengully2005@yahoo.com.au](mailto:greengully2005@yahoo.com.au)

Peter Kelly – PO Box 7, Kendall, NSW 2439. 65594172.

Bob Locke - 291 Crowther Drive, Kundabung, NSW 2441. 65-615124  
[bmll@bigpond.com](mailto:bmll@bigpond.com)

Marylou Locke - 291 Crowther Drive, Kundabung, NSW 2441. 65-615124 -  
[bmll@bigpond.com](mailto:bmll@bigpond.com)

Tom McCormack – 89 Yass River Road, Yass, NSW 2582. 6226 5626 –  
[tomlou@iinet.net.au](mailto:tomlou@iinet.net.au)

Tom Perkins Snr. – 14 Virginia Street, Denman, NSW 2328. 6547 1290 –  
[vpe63190@bigond.net.au](mailto:vpe63190@bigond.net.au)

Sonya Ruprecht – 17473 Pacific H'way, Ghinni Ghinni, NSW 2430. –  
[dsruprecht@westnet.com.au](mailto:dsruprecht@westnet.com.au)

Louise Stevens – 87 Forest Road Batlow, NSW 2730. 6949 2507 –  
[louisestevens2@bigpond.com](mailto:louisestevens2@bigpond.com)

Sally Stevens – 306 Land Street, Hay, NSW 2711. 6993 1431 -  
[sally.stevens5@bigpond.com](mailto:sally.stevens5@bigpond.com)

Gary Tweedie – 11 Fairfax Road, Woollamia, NSW 2540 -  
[tweedie11@optusnet.com.au](mailto:tweedie11@optusnet.com.au)

Tony Warren – 13 Herbert St, Kemps Ck, NSW 2178. 0412 9600600 –  
Email: [tonywarren@optusnet.com.au](mailto:tonywarren@optusnet.com.au)



## Newsletter advertising

Deadlines for the newsletter will be the 10<sup>th</sup> day of every even month, **February, April, June, August, October** and **December** UNLESS otherwise stated.

Remember to get your Ride Previews and Ride Reviews in as early as possible.

### IMPORTANT NOTICE

It is preferable for Newsletter content to be emailed in Rich Text format, as a Word document or inside an email. Photos should be high resolution .jpg files, no larger than 3MB. Photo's sent via mail will be scanned and returned if a self-addressed, stamped envelope is supplied.

You should always check to make sure that any emailed material has actually been received by the editor.

Advertisements will not be published unless they are accompanied by an appropriate cheque made out to the NSW ERA. Long term display advertisers can be invoiced by the NSW ERA. For more information please contact the editor.

### Advertising rates – including GST

*\*Minimum rate per advertisement for a maximum of 50 words.*

	One Issue	Two Issues	Full year
Full page	\$110	\$198	\$550
Half page	\$66.00	\$120	\$275
Quarter page	\$33	\$66	\$154
Inside front cover	\$132	\$220	\$660
Inside back cover	\$132	\$220	\$660
Outside back cover	\$142		
Inserts	\$125 + P&H		
CLASSIFIED			
Members	\$5.50*		
Non-members	\$11.00*		

### Advertising rates – including GST

*\*Minimum rate per advertisement for a maximum of 50 words.*

**Additional words \$5.50 for 10 or part thereof.**

Send Letters to the Editor to:

Helen Rich, Post Office Box 7197, Wilberforce NSW 2756

Phone: (02) 4576 3388

Email: [wattlebee2001@yahoo.com](mailto:wattlebee2001@yahoo.com)

At the discretion of the Editor, these letters may be forwarded to the NSW ERA committee for approval prior to publication.

Please send all correspondence addressed to Helen Rich as above.

# NSW State Management Committee

<b>Executive</b>		
<b>Tom Perkins Snr</b>	<b>President</b> , Procedures, Governance, AERA	Phone: (02)65471290 Mobile 0428592876 Email: <a href="mailto:vpe63190@bigpond.net.au">vpe63190@bigpond.net.au</a>
<b>Marlee Turnbull</b>	<b>Vice President</b> , Promotions, Child Protection Officer Facebook, Merchandising	Phone : (02) 4575 2279 Mobile : 0432 074995 Email : <a href="mailto:marleeturnbull@y7mail.com">marleeturnbull@y7mail.com</a>
<b>Gay Bonham</b>	<b>Secretary</b> , Public Officer, Ride Administration,	Phone: (02)67852055 Email: <a href="mailto:jgbonham@bigpond.net.au">jgbonham@bigpond.net.au</a>
<b>Tom McCormack</b>	<b>Treasurer</b> , AERA	Phone: (02) 6226 5626 Email: <a href="mailto:tomlou@iinet.net.au">tomlou@iinet.net.au</a>

## Non Executive

	International	
<b>Gary Tweedie</b>	AERA, Track Preservation, National Parks & Trails	Phone: (02) 4447 8573 Mobile 0413 297606 Email: <a href="mailto:tweedie11@optusnet.com.au">tweedie11@optusnet.com.au</a>
<b>Haydn Fisher</b>	Horse Welfare, Chief Stewards & TPR's, Vets, Early Warning	Phone: (02) 6373 3932 or 04 2832 4449 Email: <a href="mailto:gailtaj@yahoo.com.au">gailtaj@yahoo.com.au</a>
<b>Carol Griffith</b>	Membership Growth	Phone: (02)43621176 Email: <a href="mailto:carol@ccpso.org.au">carol@ccpso.org.au</a>
<b>John Howe</b>	Ride Calendar	Phone: (02) 6373 7750 Mobile 0401712138 Email: <a href="mailto:greenegully2005@yahoo.com.au">greenegully2005@yahoo.com.au</a>
<b>Brad Dillon</b>	Website, Newsletter, Google Maps	Phone: (02)49965691 Mobile 0400 314 629 Email: <a href="mailto:brad_dillon@bigpond.com">brad_dillon@bigpond.com</a>

## Zone Delegates

<b>Greg Moore</b>	Zone 1 – Feedback/ Ride Surveys, Grants	Phone : (02)4573 2357 Mobile 0419 692 070 Email : <a href="mailto:gregoryamoore@hotmail.com">gregoryamoore@hotmail.com</a>
<b>Melissa Attwell</b>	Zone 2 Central West	Phone: 04 1769 7207 Email: <a href="mailto:attwelltransport@yahoo.com.au">attwelltransport@yahoo.com.au</a>
<b>Steve Roberts</b>	Zone 4 - Snowy	Phone: 6236 8442 Mobile: 04137 59226 Email: <a href="mailto:stevenhroberts@hotmail.com">stevenhroberts@hotmail.com</a>
<b>Belinda Hopley</b>	Zone 5 – Horse Welfare, Chief Stewards & TPR's, Vets, Early Warning	Phone: (02)62382293 Email: <a href="mailto:Belinda.brian@netspeed.com.au">Belinda.brian@netspeed.com.au</a>
<b>Kieron Power</b>	Zone 6 – North Coast	Phone: 65512331 and 0439742360 Email: <a href="mailto:kieronpower@optusnet.com.au">kieronpower@optusnet.com.au</a>

## Non Committee Personnel

NSW Secretariat	Sonya Ruprecht, Post Office Box 6627, Chatham NSW 2430. Phone (02) 6553 8640 Fax 65 538661 Email: <a href="mailto:nswera@westnet.com.au">nswera@westnet.com.au</a>
Newsletter Editor	Helen Rich, PO Box 7197 Wilberforce NSW 2756 Phone: (02) 4576 3388 Mobile 0428 763 388 Email: <a href="mailto:wattlebee2001@yahoo.com">wattlebee2001@yahoo.com</a>
Course Preservation	Fiona Meller, Phone: (02) 4576 1344, fax (02) 4576 0630 Email: <a href="mailto:effandee@iprimus.com.au">effandee@iprimus.com.au</a>
AERA Secretary	Ieva Peters, 96 Battersby Road, Anketell WA 6167. Landline: (08) 9410 1014 Mobile: 0403 333 692. Email: <a href="mailto:ieva.peters@bigpond.com">ieva.peters@bigpond.com</a>

**NSW ERA Website:** [www.nswera.asn.au](http://www.nswera.asn.au)

**AERA:** [www.aera.asn.au](http://www.aera.asn.au)

**Endurance World:** [www.enduranceworld.net](http://www.enduranceworld.net)